

COVID-19: Northern Virginia & Virginia

March 9, 2022

Contents

- **Summary Table: Documented Cases, Hospitalizations, Deaths, 3/18/2020 – 3/9/2022**
 - Virginia, Northern Virginia, Northern Virginia Jurisdictions
- **COVID-19 Cases Charts, Northern Virginia & Virginia, 3/18/2020 – 3/9/2022**
 - Cumulative and Daily
- **COVID-19 Hospitalization Charts. Northern Virginia & Virginia, 3/18/2020 – 3/9/2022**
 - Cumulative and Daily
- **COVID-19 Death Charts, Northern Virginia & Virginia, 3/18/2020 – 3/9/2022**
 - Cumulative and Daily
- **COVID-19 Immunization: Vaccinations, Northern Virginia, Virginia, 3/8/2022**

COVID-19 Data, Charts Northern Virginia & Virginia

March 9, 2022

Context: Data Limitations

- COVID-19 data summarized in the table and charts below comes from the public use database maintained by the Virginia Department of Health. The table (Slide 3) combines Falls Church and Fairfax City data with that of Fairfax County and data for Manassas and Manassas Park with that of Prince William County.
- Case counts are of those who have tested positive for the coronavirus. Testing levels and protocols, and the data generated, are not sufficient to determine actual levels of exposure and infection or to calculate reliably the incidence or prevalence of the disease locally or statewide. The undercount and associated uncertainty necessarily limits the value of the ratios and rates that we have derived, but combined with the data and charts distributed over the last two years they give a useful view of Virginia and Northern Virginia trends, as well as of regional differences in infection levels, hospitalizations and mortality.
- Hospitalization counts are more reliable, but that data too has limitations. For example the source of admission for COVID-19 hospital cases is not available. So, one cannot determine reliably the number of cases referred to hospitals from nursing homes, assisted living facilities or other congregate living settings. The published data does not permit linkage between sites where infection and treatment occur.
- COVID-19 exposure and documented infection, hospitalization and mortality were much higher in Northern Virginia than elsewhere in the state during the initial months of the pandemic. That has changed steadily, and significantly, since mid 2020. The early difference between Northern Virginia (PD 8) and the rest of state diminished as the epidemic spread more widely. Rather than more than one-half of Virginia's documented cases, hospitalizations and deaths reported during the early months of the epidemic, Northern Virginia (PD8) now has notably lower documented COVID-19 case, hospitalization and death rates than elsewhere in Virginia. The crude hospitalization rate (COVID-19 hospitalizations per 100,000 population) now is about 73% of the average rate reported for the rest of Virginia. The reported COVID-19 crude death rate (deaths per 100,000 population) is now less than half the average reported rate for the rest of Virginia.
- The information presented below should be considered descriptive. The data, and the derived ratios and rates presented are illustrative, not definitive. They are informative nevertheless.
- COVID-19 data, and related information, for Virginia residents and medical services and facilities statewide is available at: <https://www.vdh.virginia.gov/coronavirus/>
- Let us know if you have questions or find errors.

**COVID-19, Northern Virginia, Virginia
Cases, Hospitalizations, Deaths (Cumulative as of March 9, 2022)**

Jurisdiction	VDH Health District	Population ¹	<u>Counts</u>			<u>COVID-19 Ratios</u>			<u>Population Based Rates</u>		
			Documented Cases ²	Hospitalizations	Deaths	Ratio: Hosp/Cases	Ratio: Deaths/Cases	Ratio: Deaths/Hosp	Cases per 100,000 Population	Hospitalizations per 100,000 Population	Deaths per 100,000 Population
Alexandria	Alexandria	159,142	29,809	725	184	2.4%	0.6%	25.4%	18,731	456	116
Arlington County	Arlington	242,152	40,489	1,075	320	2.7%	0.8%	29.8%	16,720	444	132
Fairfax County ³	Fairfax	1,181,802	177,465	4,437	1,451	2.5%	0.8%	32.7%	15,016	375	123
Loudoun County	Loudoun	413,546	66,362	1,428	368	2.2%	0.6%	25.8%	16,047	345	89
Prince William County ⁴	Prince William	523,891	106,667	3,757	811	3.5%	0.8%	21.6%	20,361	717	155
Northern Virginia (PD 8) Total		2,520,533	420,792	11,422	3,134	2.7%	0.7%	27.4%	16,695	453	124
Virginia Total		8,535,519	1,653,212	47,948	19,212	2.9%	1.2%	40.1%	19,369	562	225
Northern Virginia: Virginia Ratio (NV/VA)		29.5%	25.5%	23.8%	16.3%						
Virginia Excluding Northern Virginia		6,014,986	1,232,420	36,526	16,078	3.0%	1.3%	44.0%	20,489	607	267

Source: Data, VDH COVID-19 Public Use Data Set-Cases, March 9, 2022, at <https://www.vdh.virginia.gov/coronavirus/>; Tabulations & Calculations, HSNV

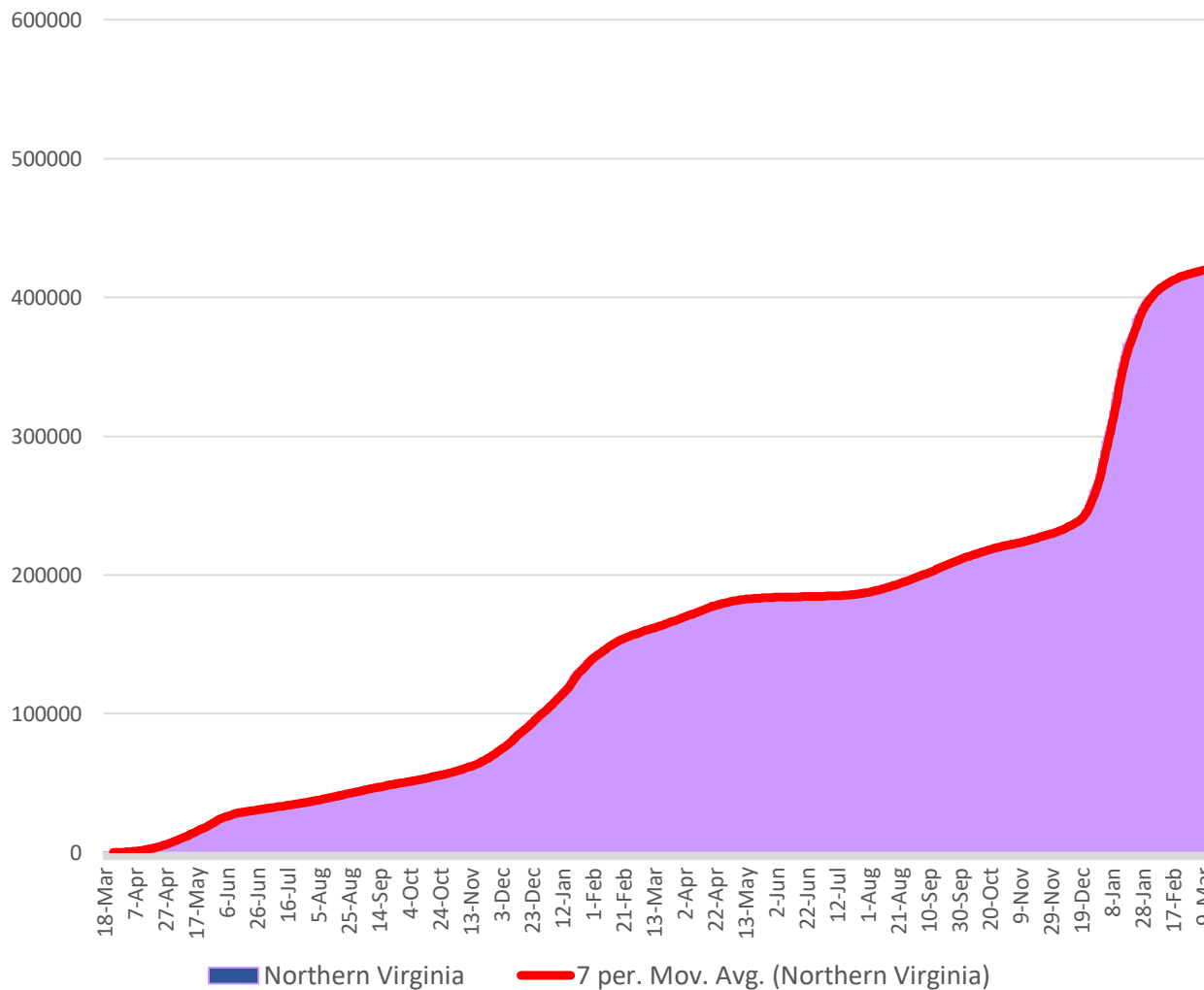
¹Population Estimates, Weldon Cooper Center for Public Service at <https://demographics.coopercenter.org/virginia-population-estimates>

²Count of those testing positive for novel coronavirus. With limited testing, actual incidence and prevalence are not known.

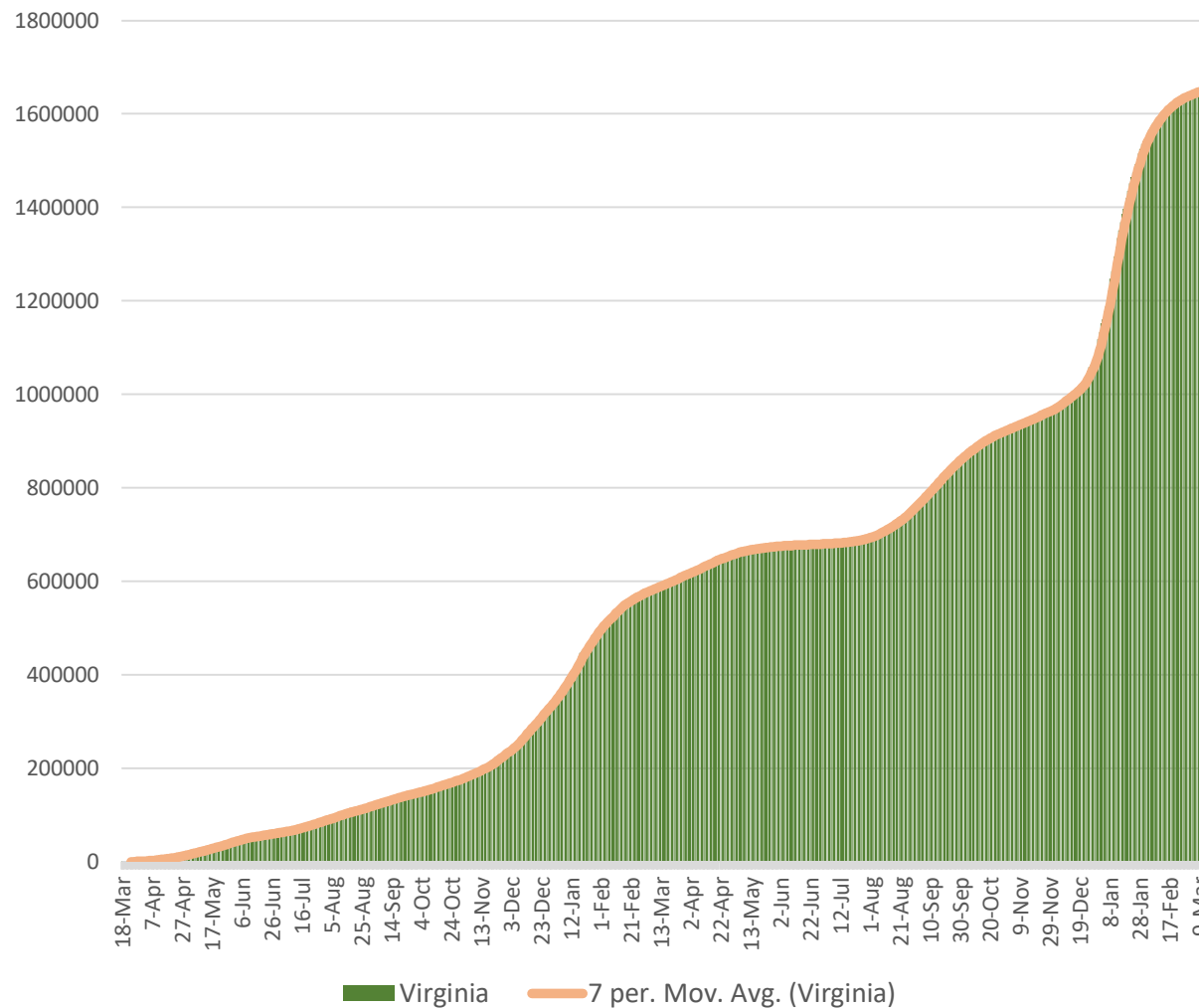
³Includes Fairfax City and Falls Church

⁴Includes Manassas and Manassas Park

Northern Virginia COVID-19 Cases, Cumulative March 18, 2020 – March 9, 2022

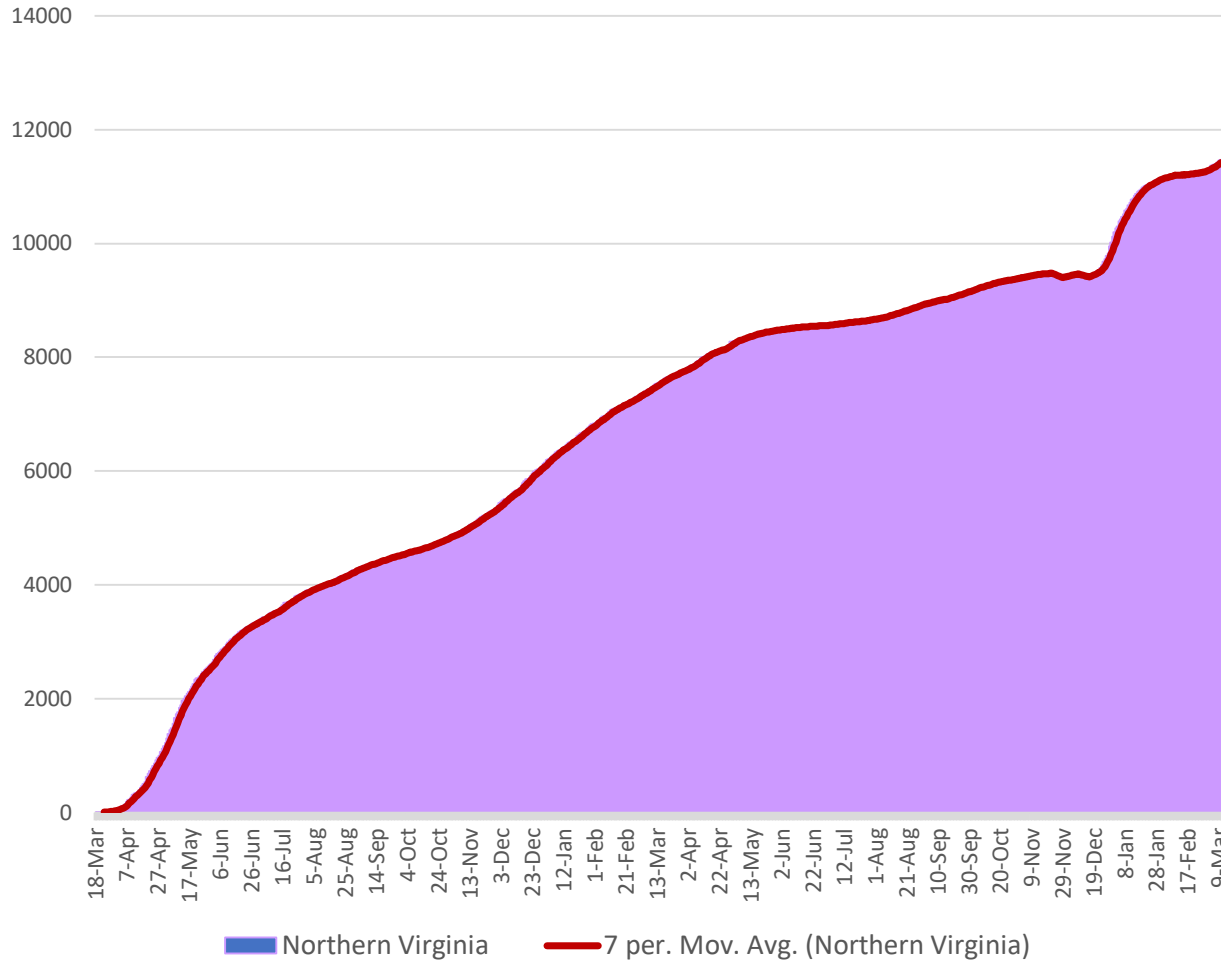


Virginia COVID-19 Cases, Cumulative March 18, 2020 – March 9, 2022

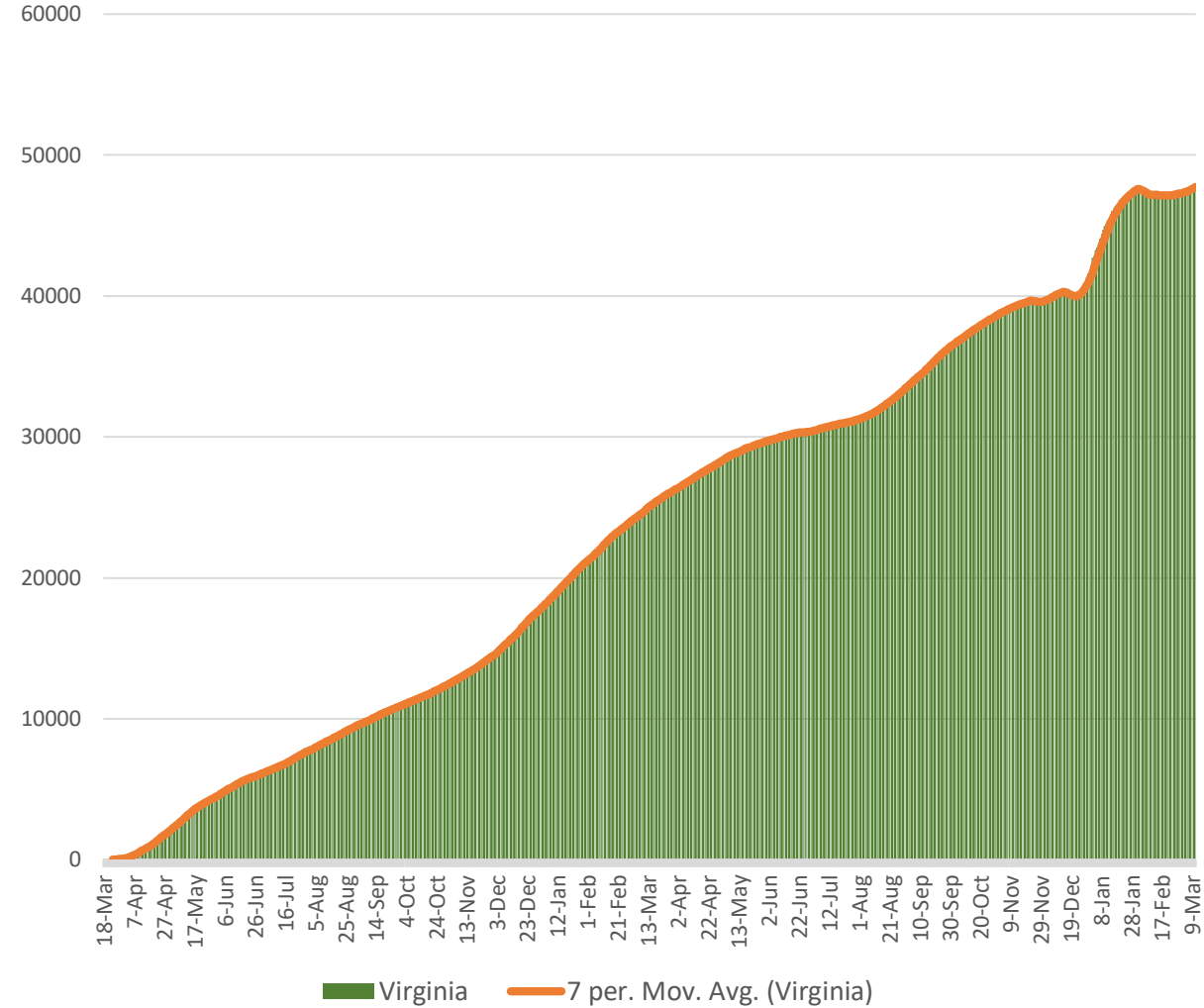


Source: VDH Covid-19 Public Use Dataset – Cases thru March 9, 2022 at <https://www.vdh.virginia.gov/coronavirus/>
Charts/Tabulations HSNV, 2022. 7 per = 7 Day Moving Average

Northern Virginia COVID-19 Hospitalizations, Cumulative March 18, 2020 – March 9, 2022

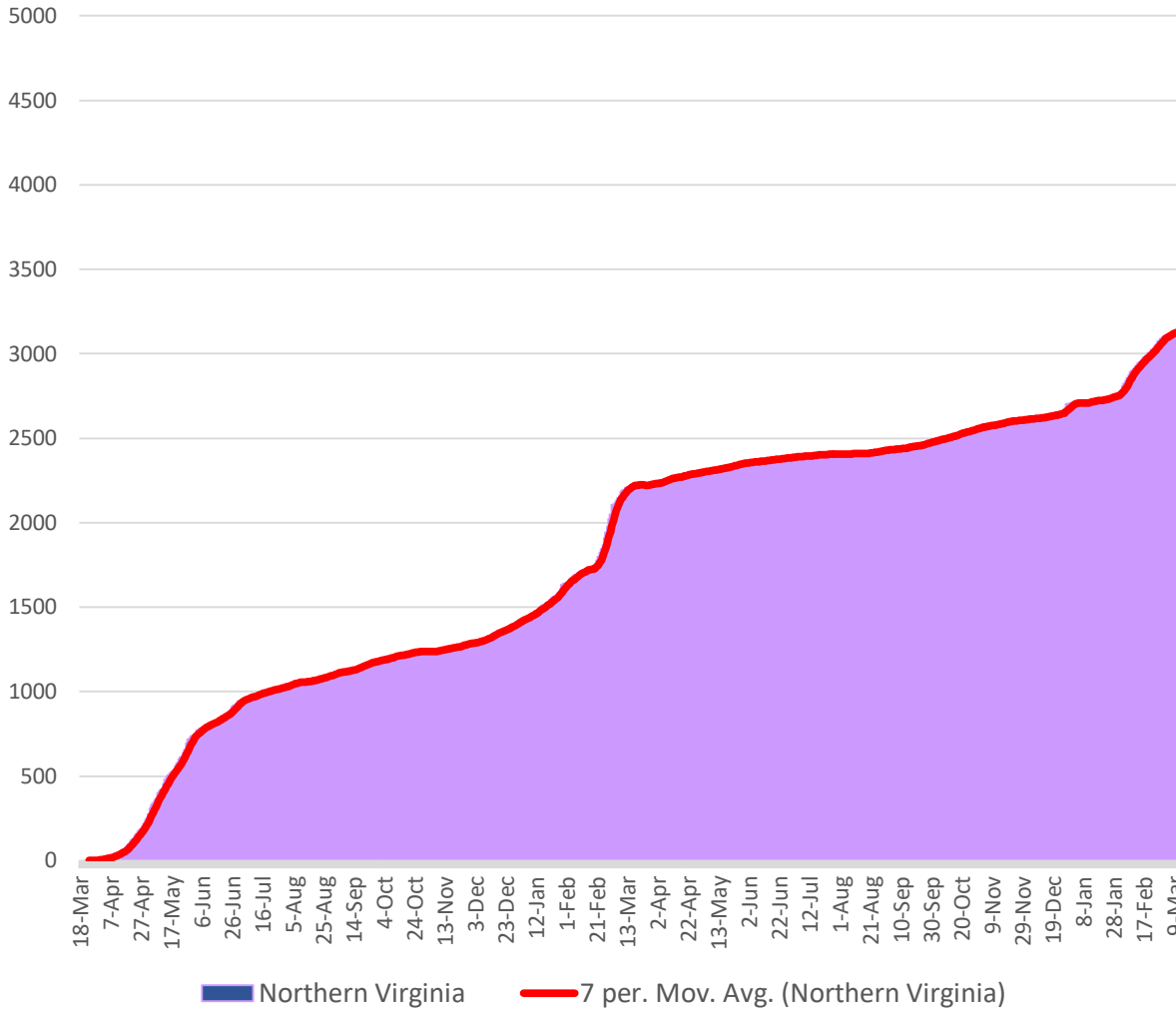


Virginia COVID-19 Hospitalizations, Cumulative March 18, 2020 – March 9, 2022

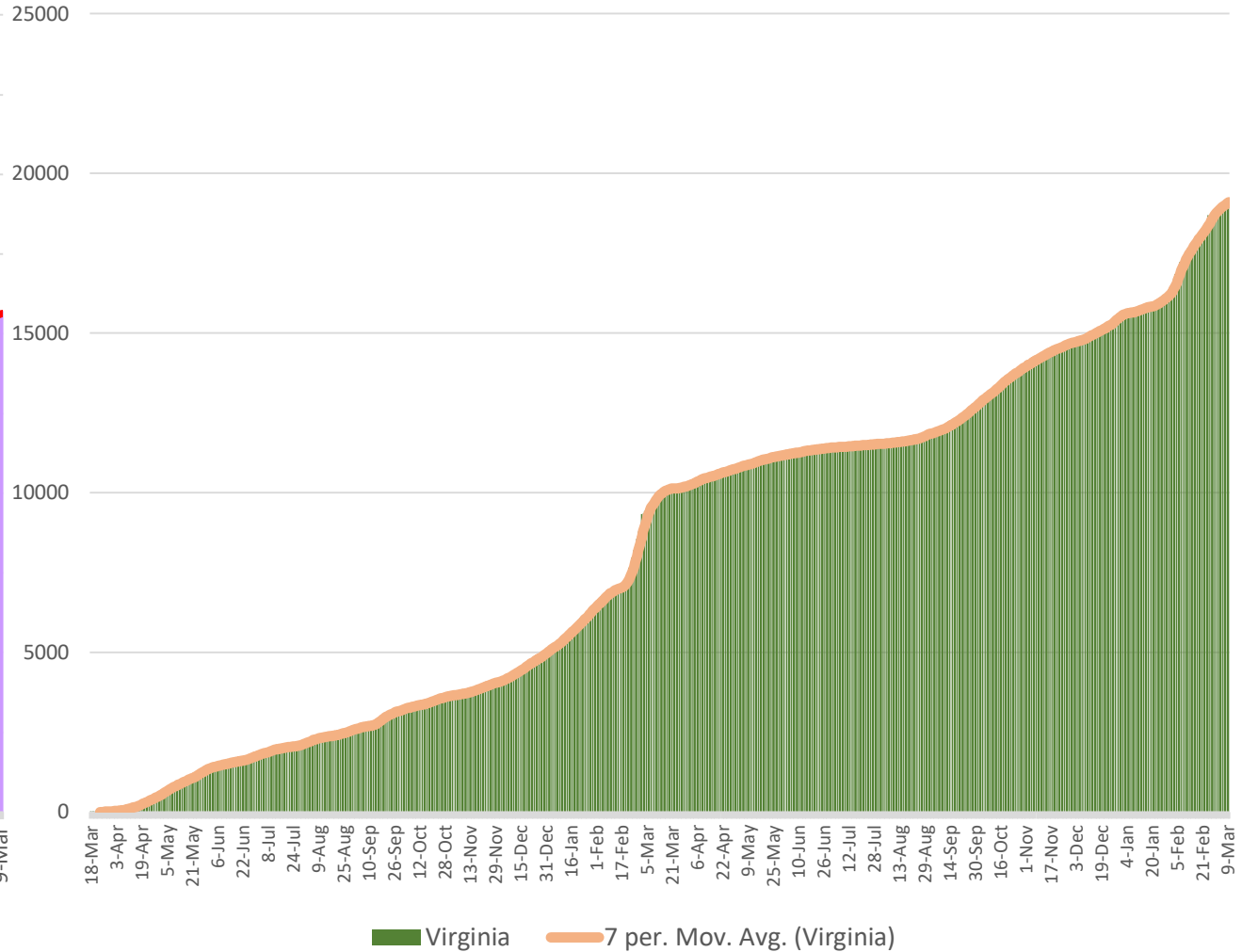


Source: VDH Covid-19 Public Use Dataset – Cases thru March 9, 2022 at <https://www.vdh.virginia.gov/coronavirus/>
Charts/Tabulations HSNV, 2022. 7 per = 7 Day Moving Average

Northern Virginia COVID-19 Deaths, Cumulative March 18, 2020 – March 9, 2022

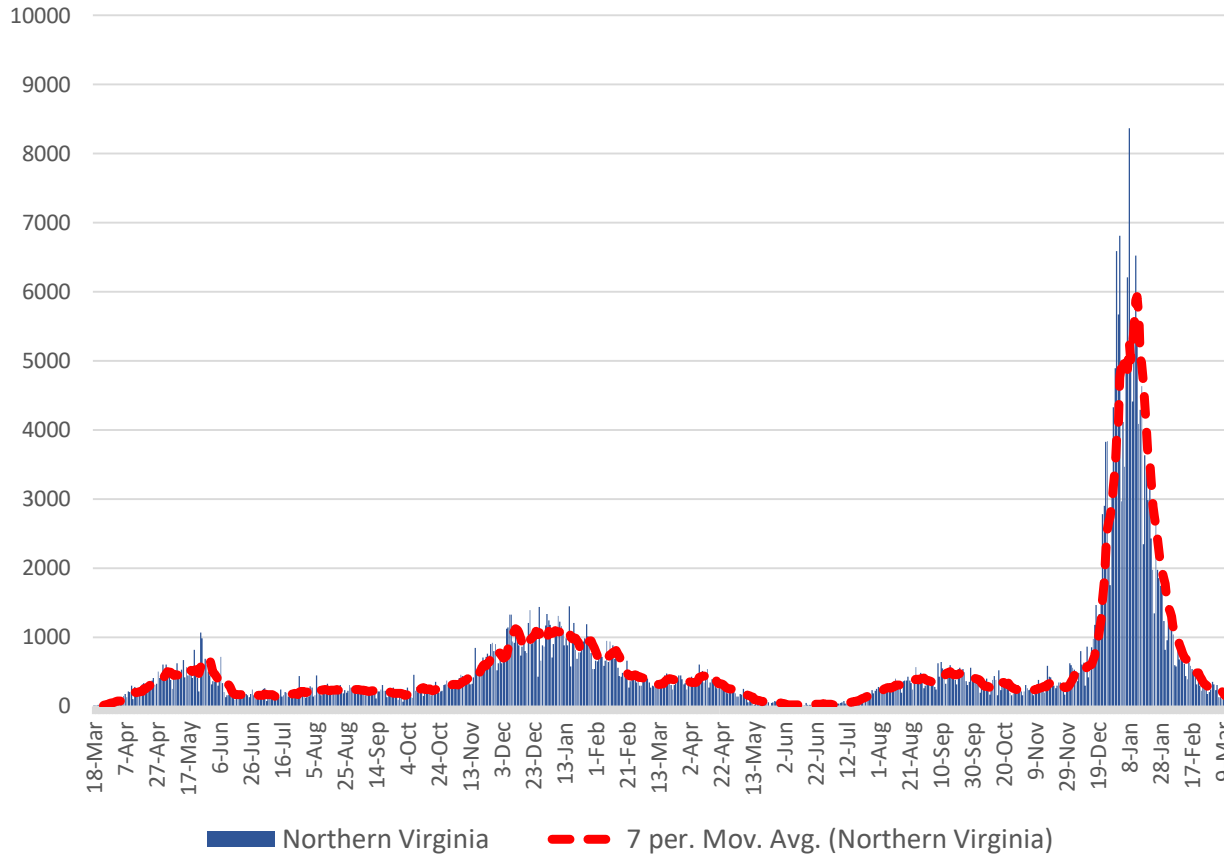


Virginia COVID-19 Deaths, Cumulative March 18, 2020 – March 9, 2022

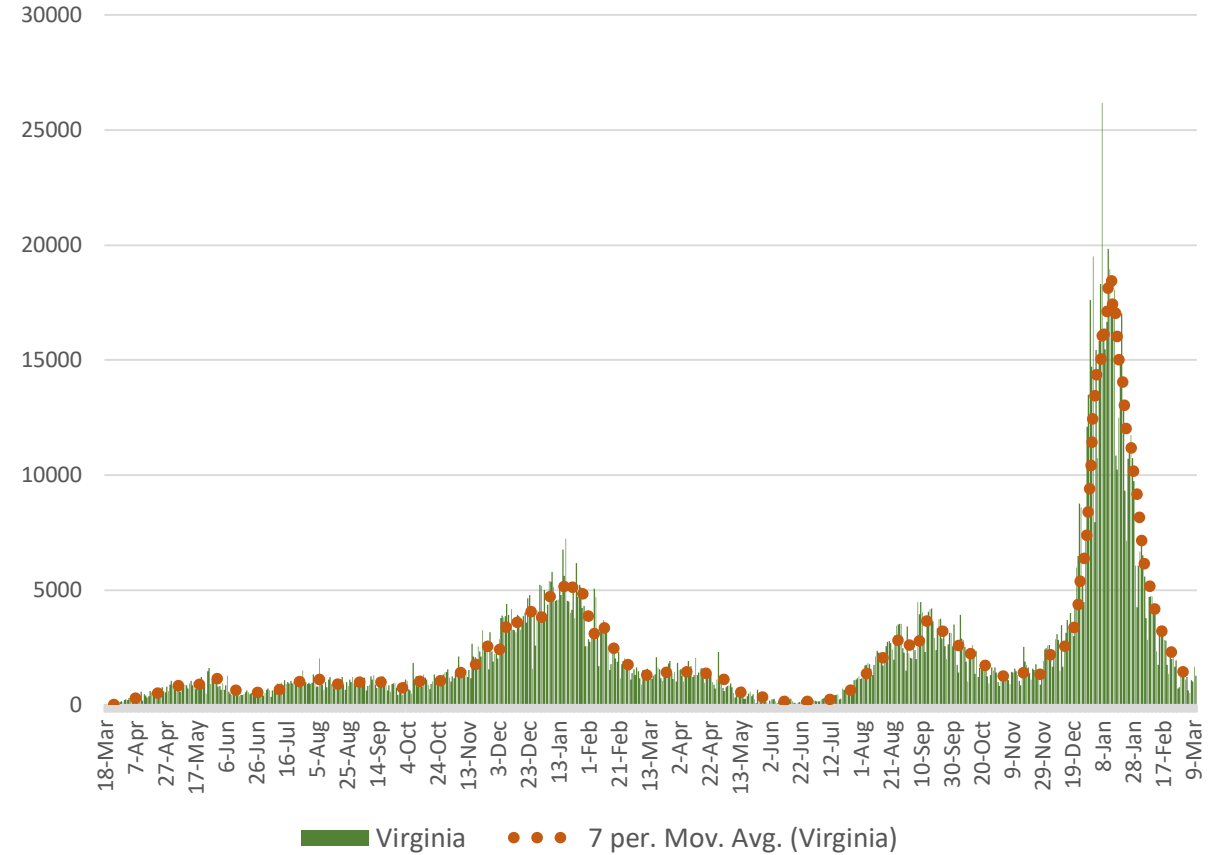


Source: VDH Covid-19 Public Use Dataset – Cases thru March 9, 2022 at <https://www.vdh.virginia.gov/coronavirus/>
Charts/Tabulations HSNV, 2022. 7 per = 7 Day Moving Average

Northern Virginia Daily [New] COVID-19 Cases March 18, 2020 - March 9, 2022

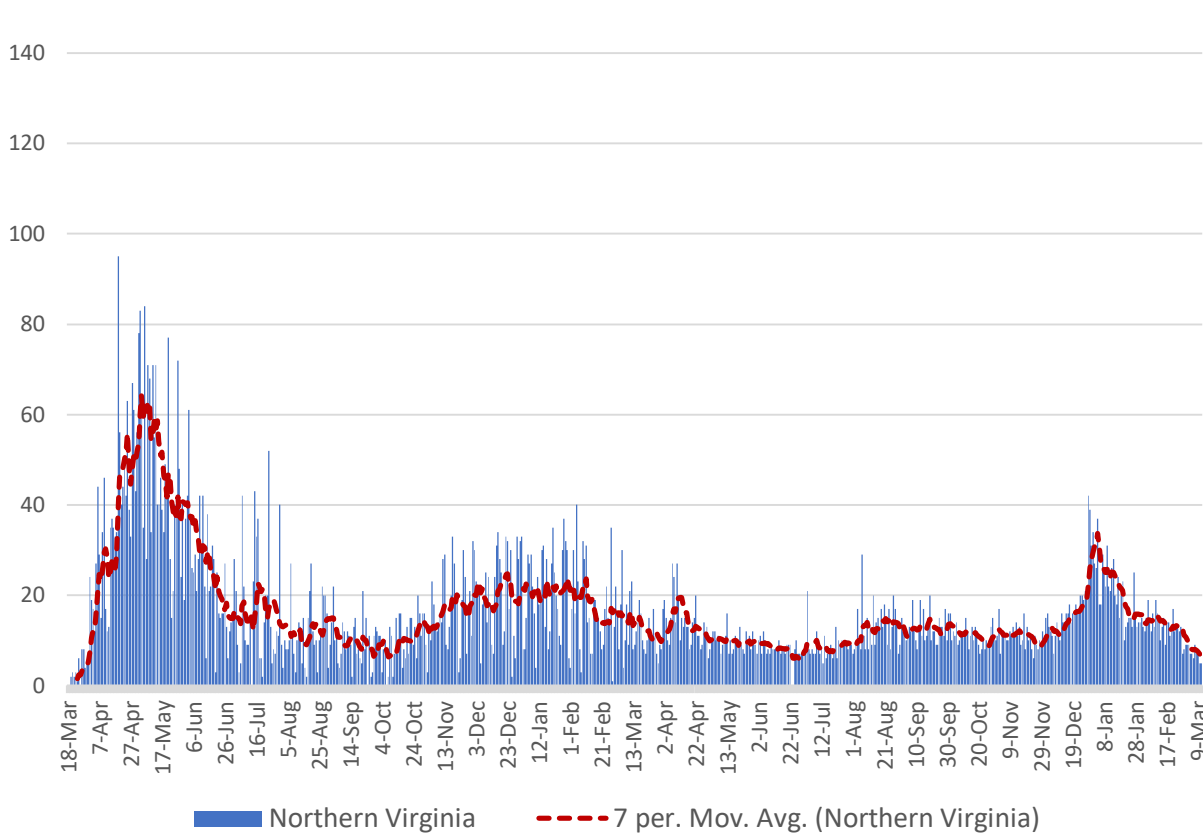


Virginia Daily [New] COVID-19 Cases March 18, 2020 - March 9, 2022

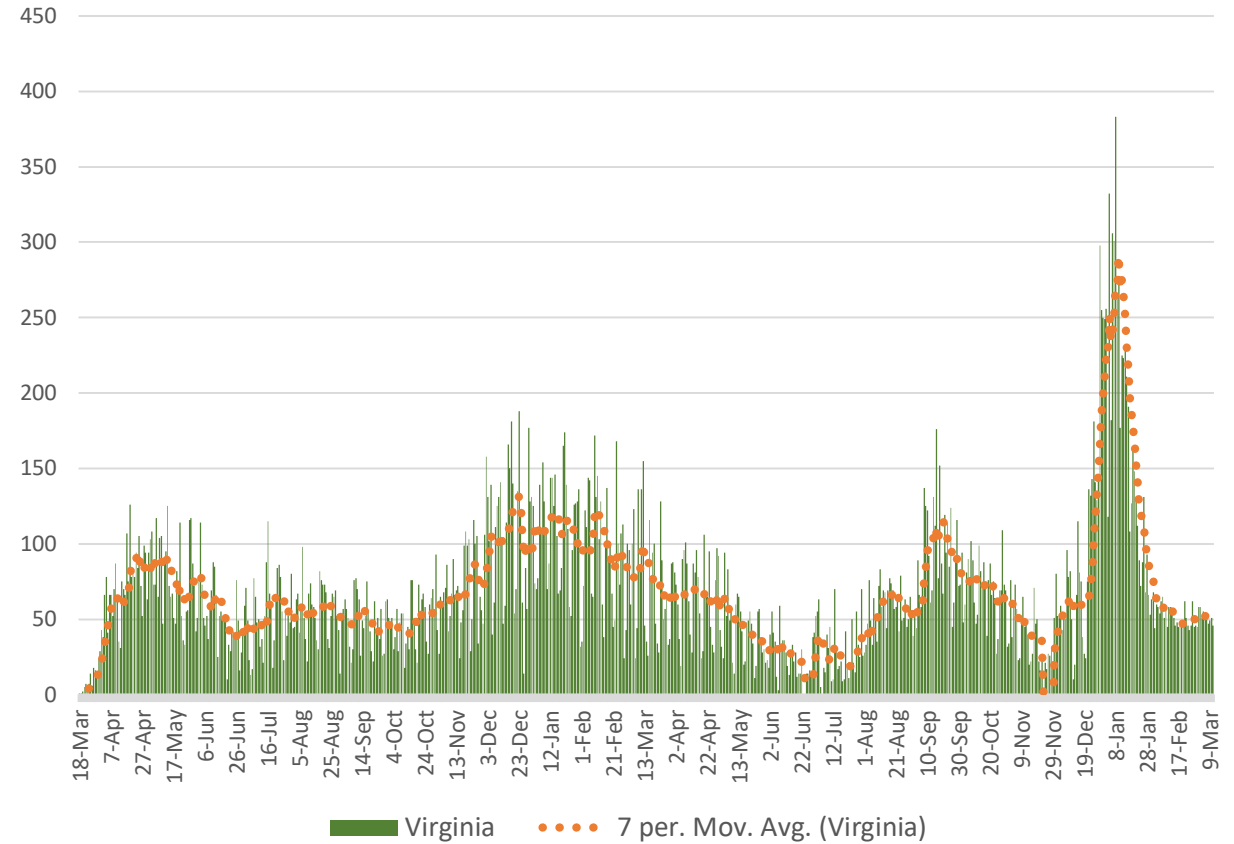


Source: VDH Covid-19 Public Use Dataset – Cases thru March 9, 2022 at <https://www.vdh.virginia.gov/coronavirus/>
Charts/Tabulations HSANV, 2022. 7 per = 7 Day Moving Average

Northern Virginia COVID-19 Hospitalizations by Date Reported March 18, 2020 - March 9, 2022

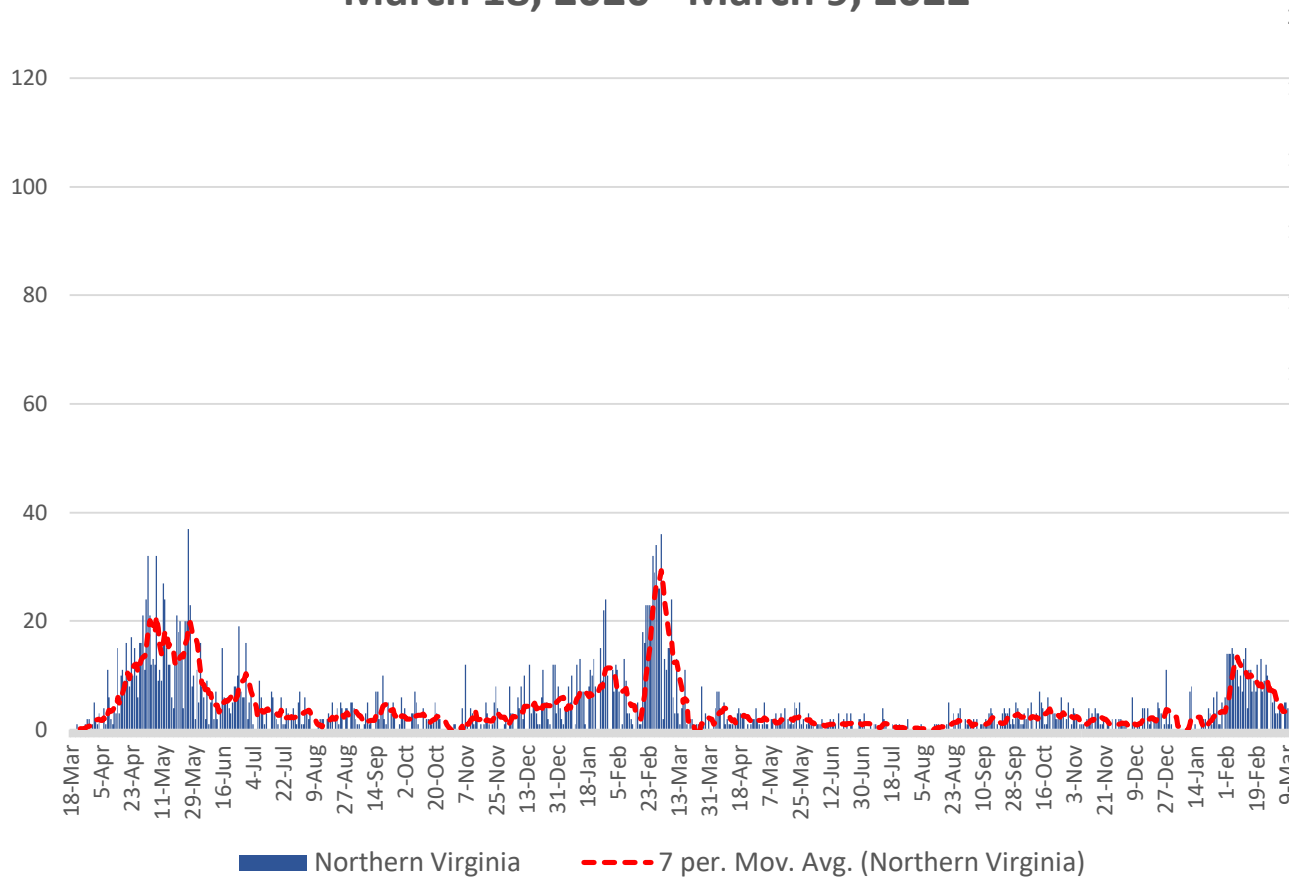


Virginia COVID-19 Hospitalizations by Date Reported March 18, 2020 - March 9, 2022

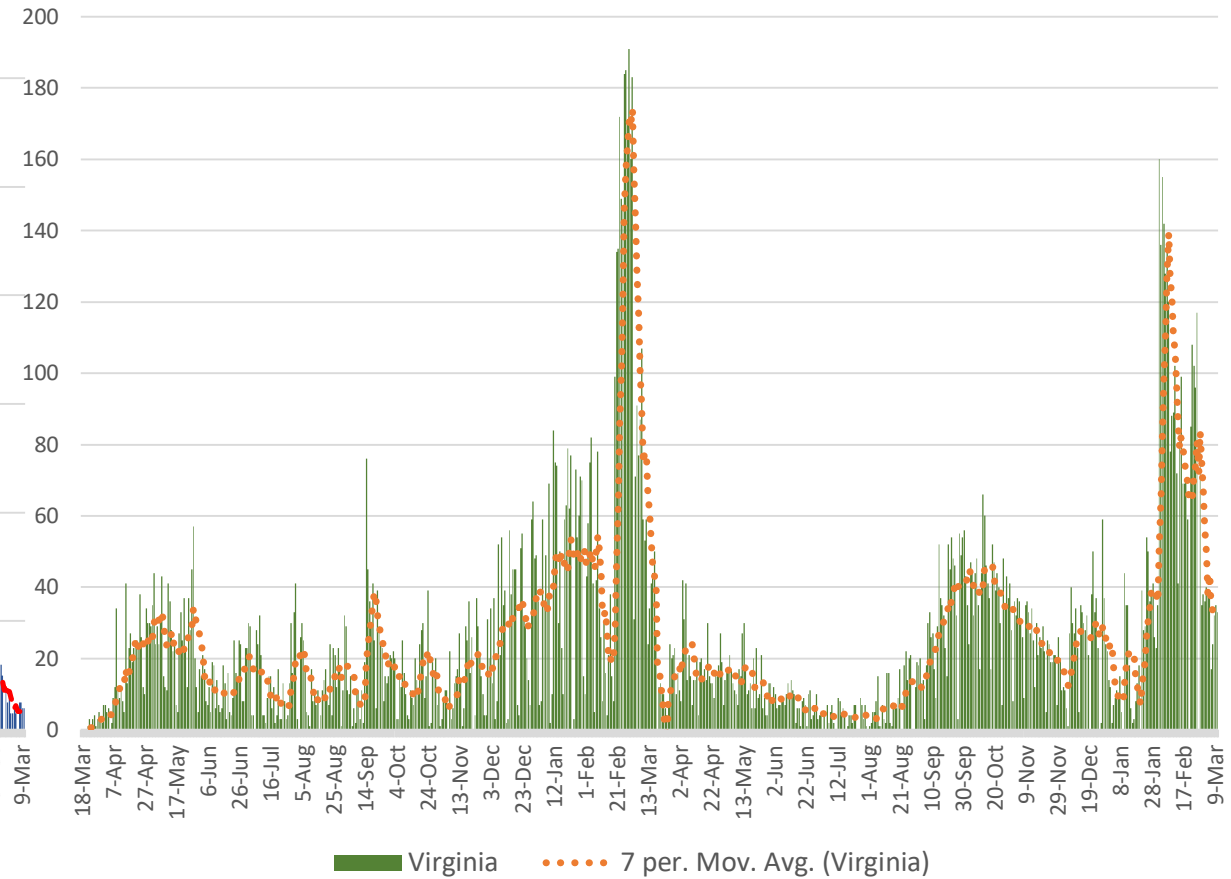


Source: VDH Covid-19 Public Use Dataset – Cases thru March 9, 2022 at <https://www.vdh.virginia.gov/coronavirus/>
Charts/Tabulations HSNV, 2022. 7 per = 7 Day Moving Average

Northern Virginia COVID-19 Deaths by Date Reported March 18, 2020 - March 9, 2022

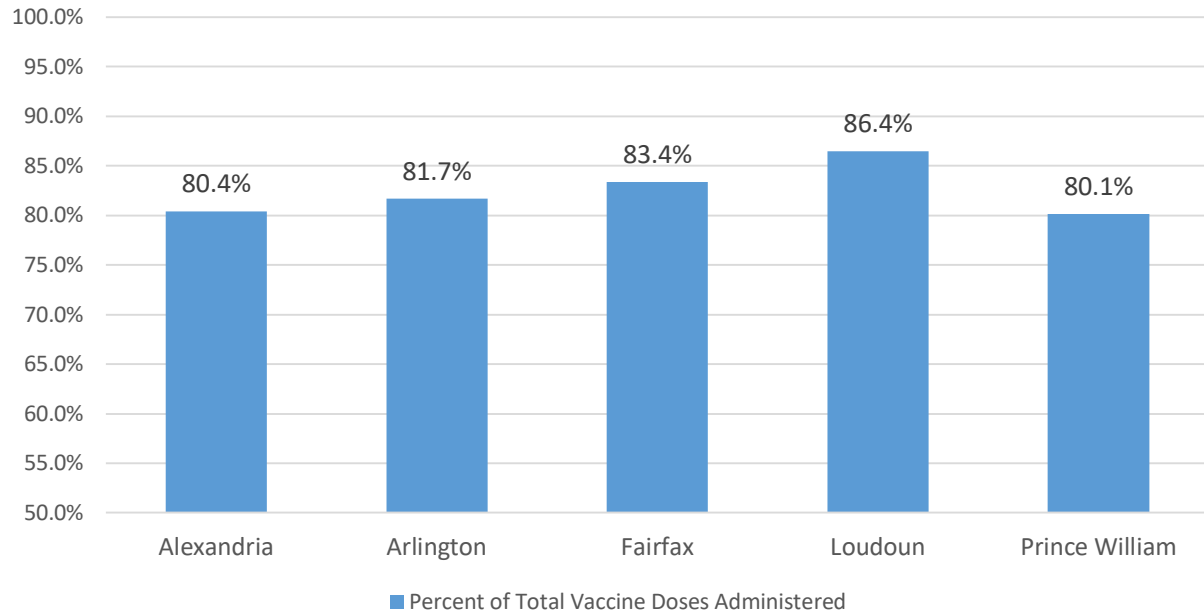


Virginia COVID-19 Deaths by Date Reported March 18, 2020 - March 9, 2022

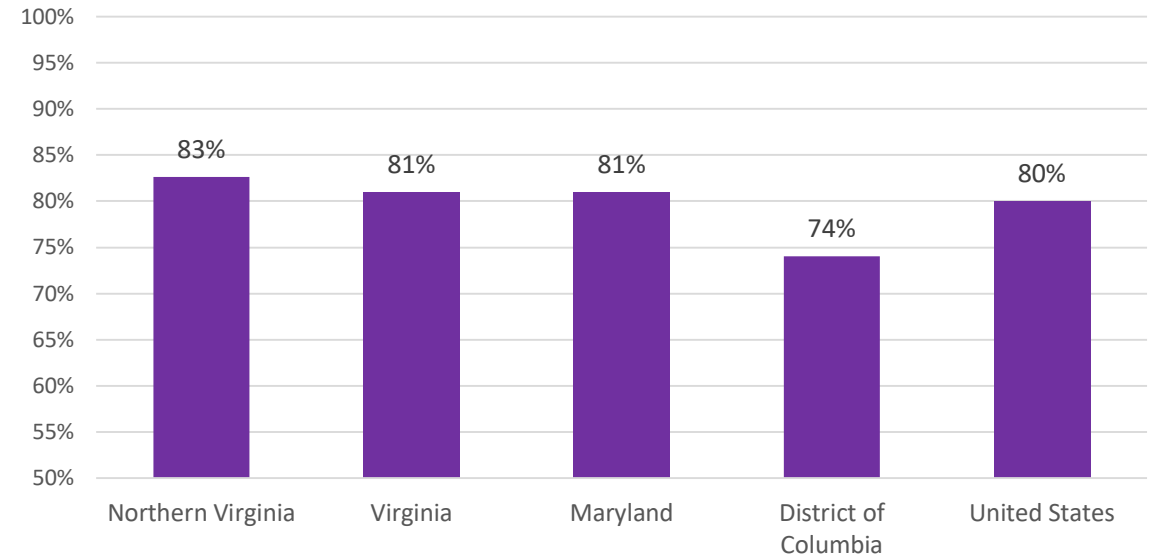


Source: VDH Covid-19 Public Use Dataset – Cases thru March 9, 2022 at <https://www.vdh.virginia.gov/coronavirus/>
Charts/Tabulations HSNV, 2022. 7 per = 7 Day Moving Average

**Northern Virginia Health Districts
Percentage of Covid-19 Vaccine Doses Administered
(1st, 2nd & 3rd)
Based on Jurisdiction Vaccine Supply Received
As of March 8, 2022**

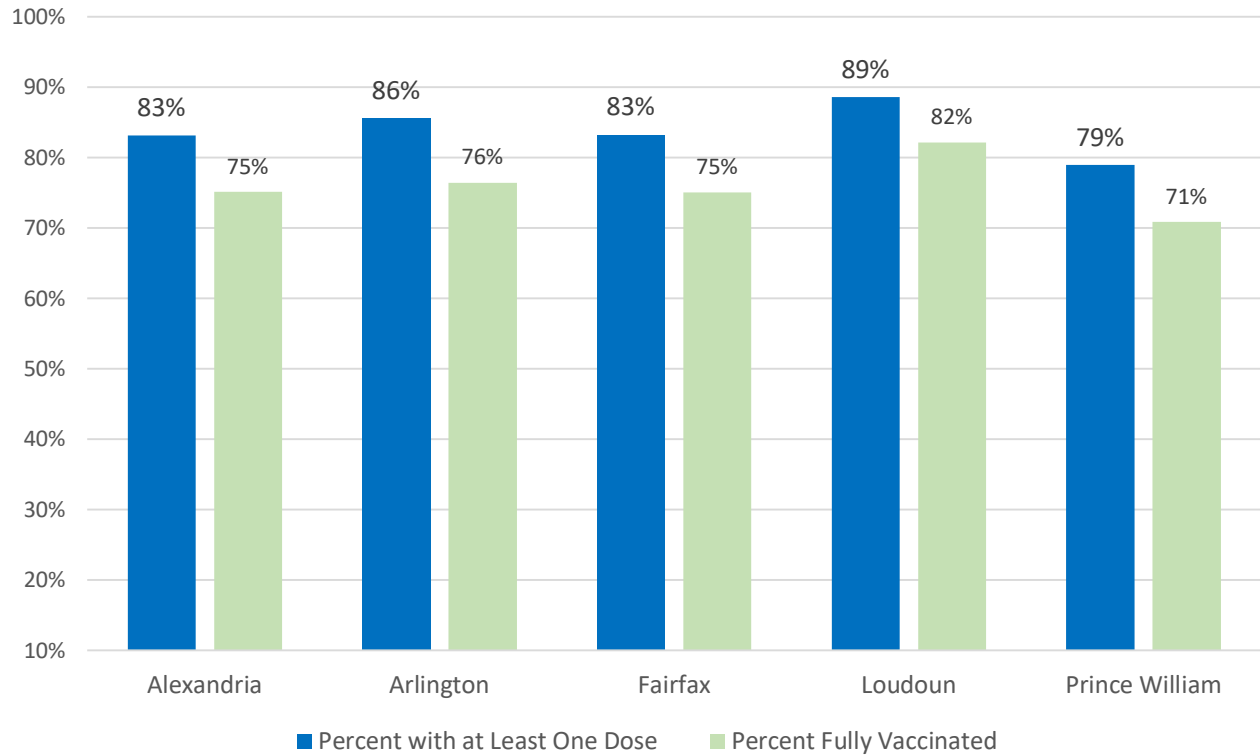


**Northern Virginia, Virginia, Maryland, D.C. and United States
Percentage of Covid-19 Vaccine Doses Administered
(1st, 2nd & 3rd)
Based on Jurisdiction Vaccine Supply Received
As of March 8, 2022**

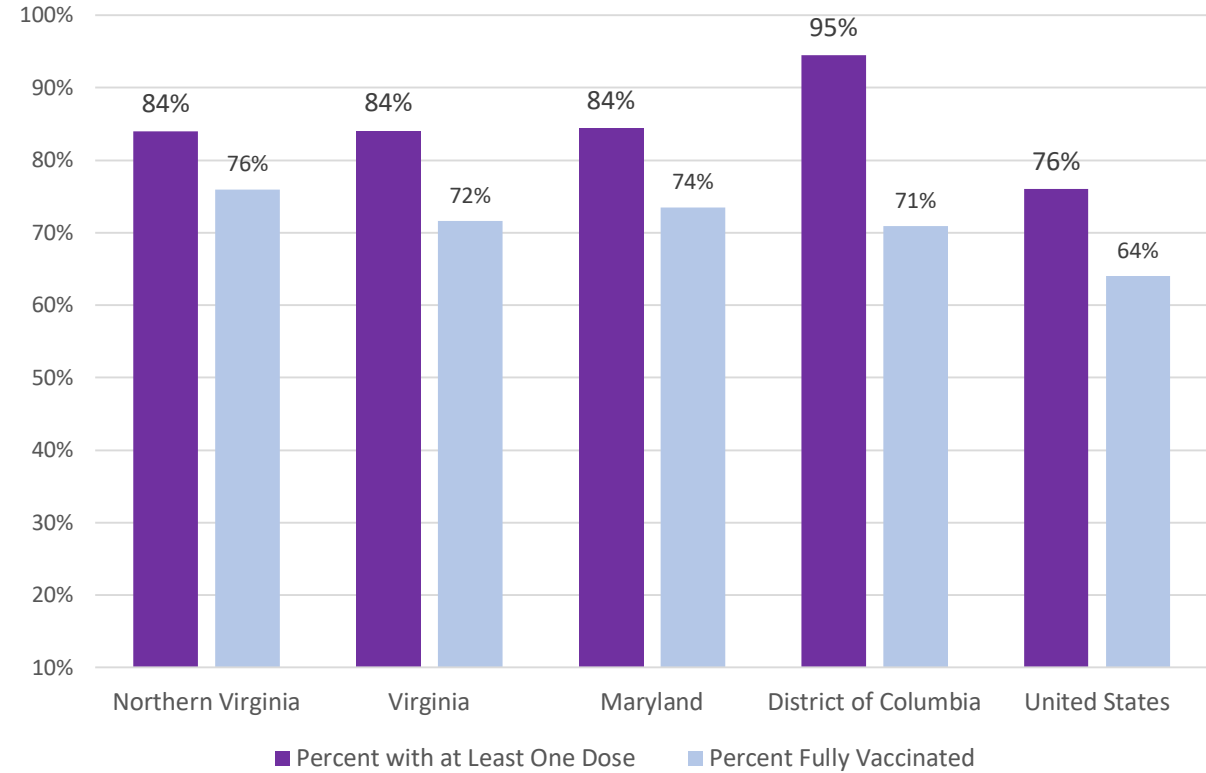


Source: VDH Covid-19 Public Use Dataset – March 8, 2022 at <https://www.vdh.virginia.gov/coronavirus/>; CDC Covid-19 Data as of March 8, 2022.
Charts/Tabulations HSANV, 2022. 7 per = 7 Day Moving Average

**Northern Virginia Health Districts
Percentage of Population Vaccinated
As of March 8, 2022**

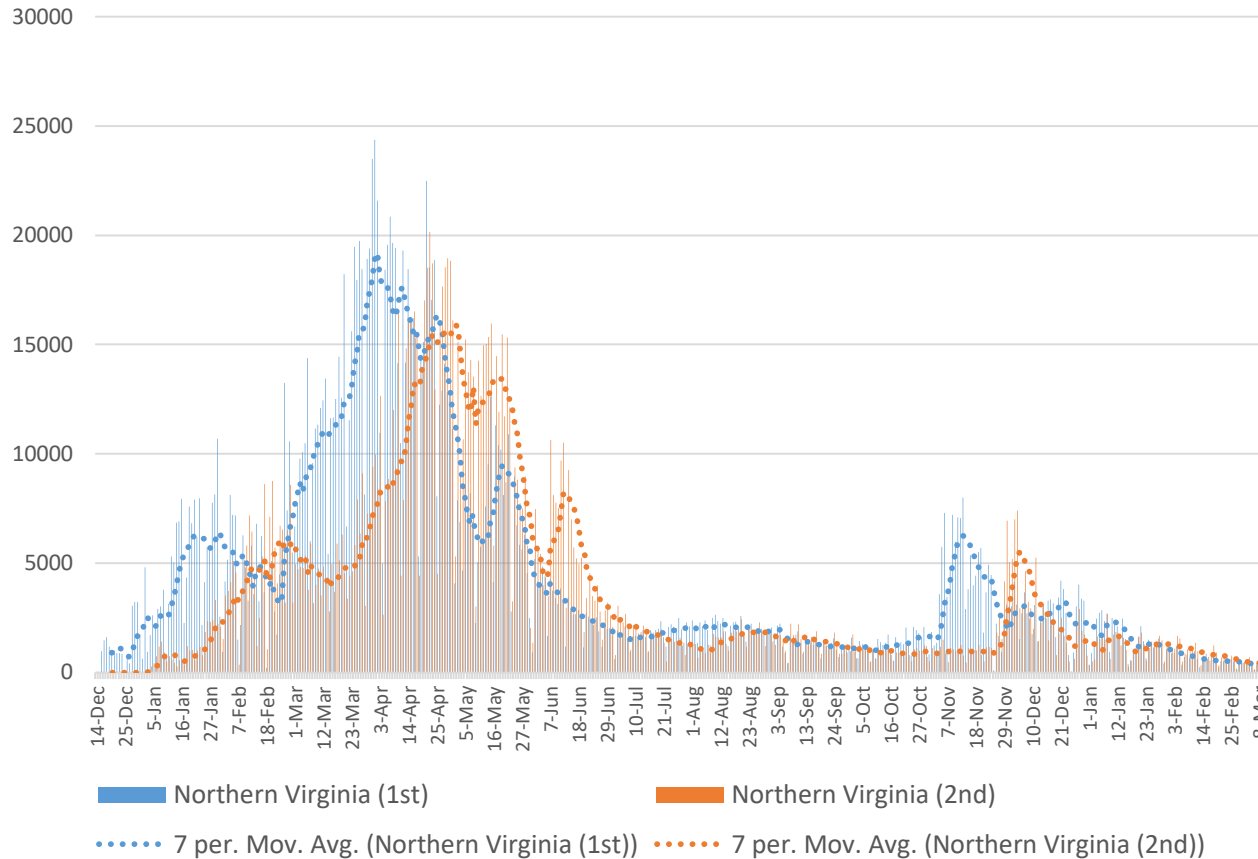


**Northern Virginia, Virginia, Maryland, D.C. and United States
Percentage of Population Vaccinated
As of March 8, 2022**

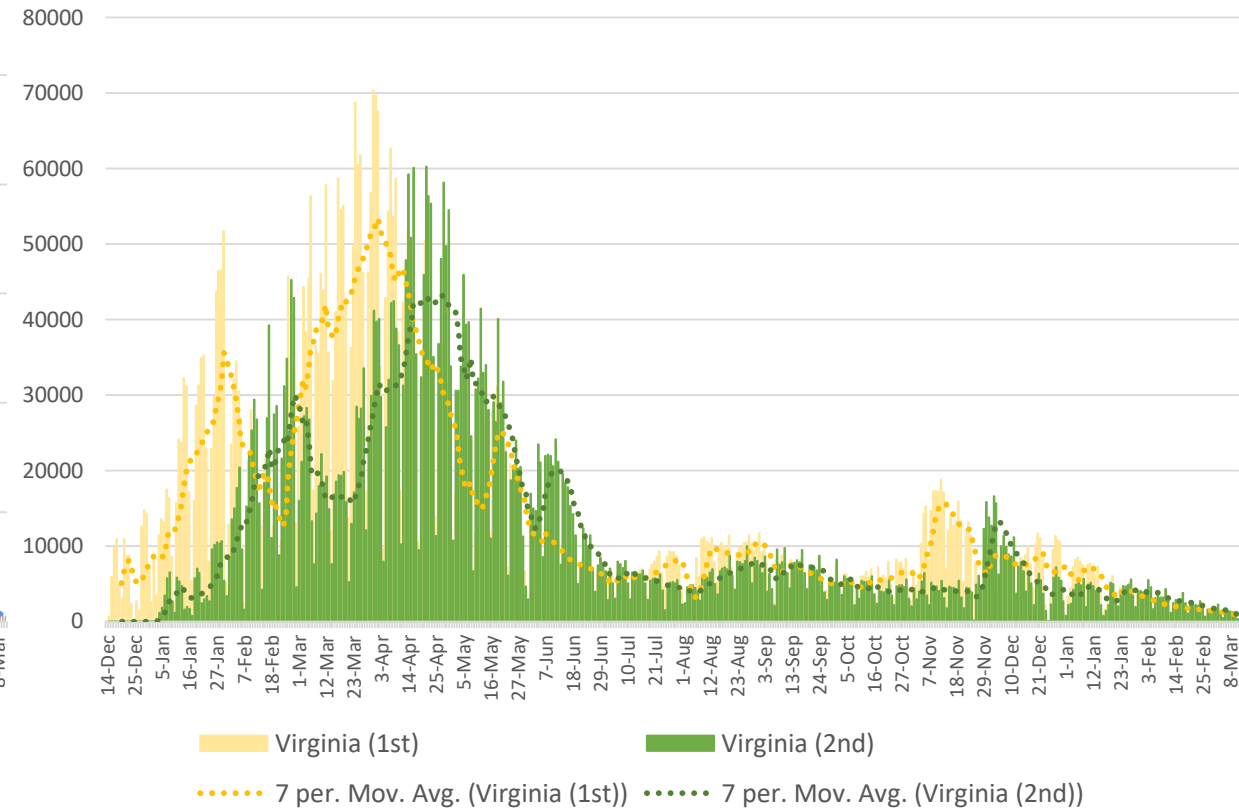


Source: VDH Covid-19 Public Use Dataset – March 8, 2022 at <https://www.vdh.virginia.gov/coronavirus/>; CDC Covid-19 Data as of March 8, 2022.
Charts/Tabulations HSANV, 2022. 7 per = 7 Day Moving Average

Northern Virginia
Covid-19 Vaccine 1st and 2nd Doses by Date Administered
As of March 8, 2022

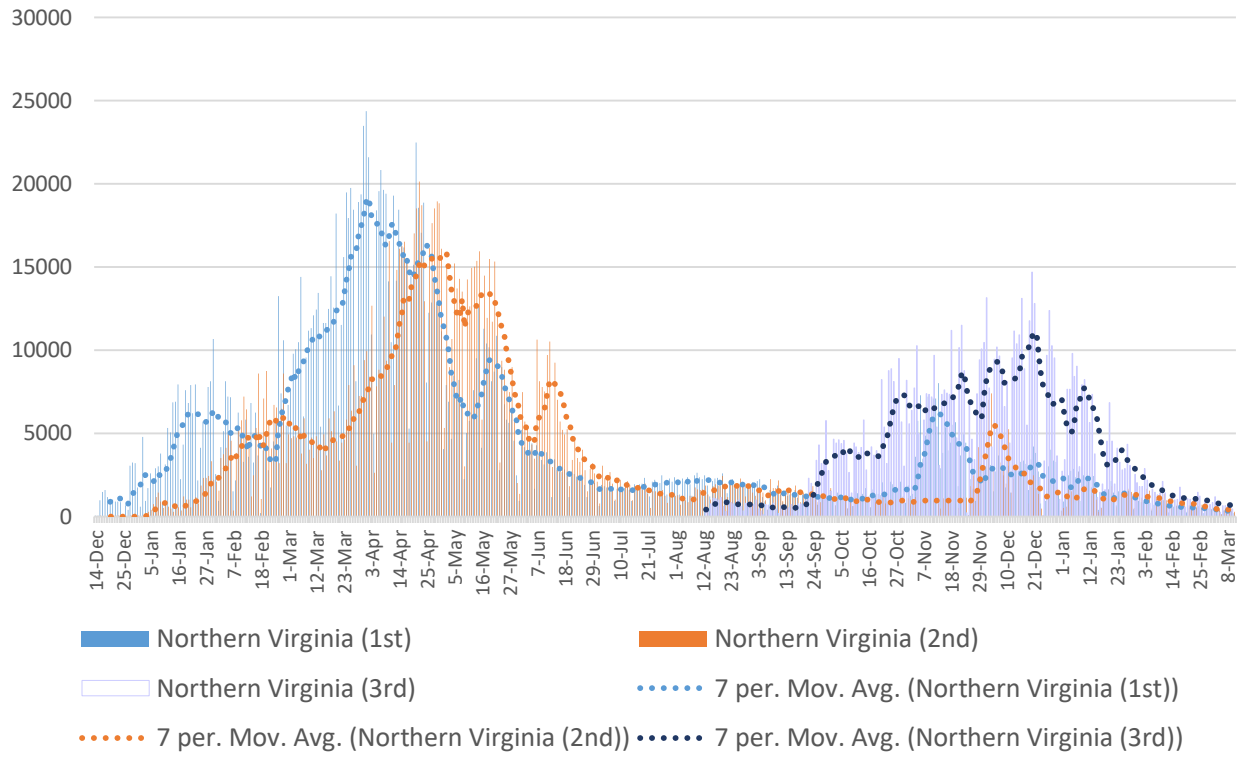


Virginia
Covid-19 Vaccine 1st and 2nd Doses by Date Administered
As of March 8, 2022

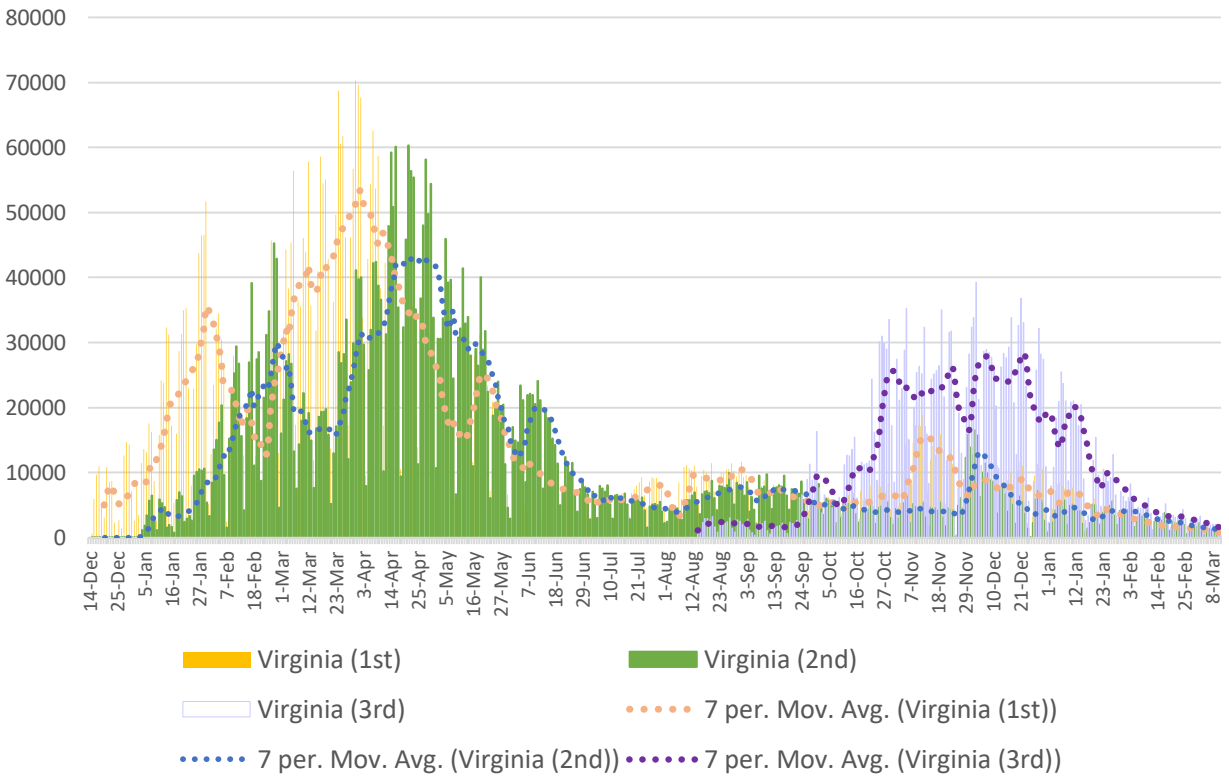


Source: VDH Covid-19 Public Use Dataset – March 8, 2022 at <https://www.vdh.virginia.gov/coronavirus/>; CDC Covid-19 Data as of March 8, 2022.
 Charts/Tabulations HSANV, 2022. 7 per = 7 Day Moving Average

Northern Virginia Covid-19 Vaccine 1st, 2nd & 3rd Doses by Date Administered As of March 8, 2022



Virginia Covid-19 Vaccine 1st, 2nd & 3rd Doses by Date Administered As of March 8, 2022



Source: VDH Covid-19 Public Use Dataset – March 8, 2022 at <https://www.vdh.virginia.gov/coronavirus/>; CDC Covid-19 Data as of March 8, 2022.
 Charts/Tabulations HSANV, 2022. 7 per = 7 Day Moving Average