

COVID-19, Northern Virginia & Virginia

May 8, 2021

Contents

- **Summary Table: Documented Cases, Hospitalizations, Deaths, 3/18/2020 – 5/8/2021**
 - Virginia, Northern Virginia, Northern Virginia Jurisdictions
- **COVID-19 Cases (Documented) Charts, Northern Virginia & Virginia, 3/18/2020 – 5/8/2021**
 - Cumulative and Daily
- **COVID-19 Hospitalization Charts. Northern Virginia & Virginia, 3/18/2020 – 5/8/2021**
 - Cumulative and Daily
- **COVID-19 Death Charts, Northern Virginia & Virginia, 3/18/2020 – 5/8/2021**
 - Cumulative and Daily
- **COVID-19 Immunization: Vaccinations, Northern Virginia, Virginia 5/5/2021**

COVID-19 Data, Charts Northern Virginia & Virginia May 8, 2021

Context: Data Limitations

- COVID-19 data summarized in the table and charts below comes from the public use database developed by the Virginia Department of Health. The table (Slide 3) combines Falls Church and Fairfax City data with that of Fairfax County, and data for Manassas and Manassas Park with that of Prince William County.
- Case counts are of those who have tested positive for the novel coronavirus. Testing levels and protocols remain insufficient to determine actual levels of exposure and infection. The available data is not sufficient to calculate reliably the incidence or prevalence of the disease locally or statewide. The undercount and associated uncertainty necessarily limits the value of the ratios or rates that we have derived, but combined with the data and charts we have distributed over the last year they give an idea of Virginia and Northern Virginia trends, as well as regional differences in infection levels, hospitalizations and mortality.
- Hospitalization counts are more reliable, but that data too has limitations. For example the source of admission for COVID-19 hospital cases is not available. So, one cannot determine reliably the number of cases referred to hospitals from nursing homes, assisted living facilities or other congregate living settings. The published data does not permit linkage between sites where infection and treatment occur.
- COVID-19 exposure and documented infection, hospitalization and mortality were much higher in Northern Virginia than elsewhere in the state during the initial months of the pandemic. That has changed steadily, and dramatically, since mid 2020. The early difference between Northern Virginia (PD 8) and the rest of state diminished as the epidemic spread more widely. Rather than more than one-half of Virginia's documented cases, hospitalizations and deaths reported during the early months of the epidemic, Northern Virginia (PD8) now has lower COVID-19 case, hospitalization and death rates than other regions of the state, and notably fewer documented COVID-19 cases and deaths than its share of the state population.
- The information presented below should be considered descriptive. The data, and the derived ratios and rates, presented are illustrative, not definitive. They will be updated as information becomes available.
- The array of COVID-19 data, and related information, for Virginia residents and medical services and facilities statewide is available at: <https://www.vdh.virginia.gov/coronavirus/>
- Let us know if you have questions or find errors.

COVID-19, Northern Virginia, Virginia
Cases, Hospitalizations, Deaths (Cumulative as of May 8, 2021)

Jurisdiction	VDH Health District	Population ¹	<u>Counts</u>			<u>COVID-19 Ratios</u>			<u>Population Based Rates</u>		
			Documented Cases ²	Hospitalizations	Deaths	Ratio: Hosp/Cases	Ratio: Deaths/Cases	Ratio: Deaths/Hosp	Cases per 100,000 Population	Hospitalizations per 100,000 Population	Deaths per 100,000 Population
Alexandria	Alexandria	159,142	11,735	562	134	4.8%	1.1%	23.8%	7,374	353	84
Arlington County	Arlington	242,152	15,214	833	254	5.5%	1.7%	30.5%	6,283	344	105
Fairfax County ³	Fairfax	1,181,802	77,358	4,044	1,103	5.2%	1.4%	27.3%	6,546	342	93
Loudoun County	Loudoun	413,546	27,614	1,044	276	3.8%	1.0%	26.4%	6,677	252	67
Prince William County ⁴	Prince William	523,891	50,501	1,860	544	3.7%	1.1%	29.2%	9,640	355	104
Northern Virginia (PD 8) Total		2,520,533	182,422	8,343	2,311	4.6%	1.3%	27.7%	7,237	331	92
Virginia Total		8,535,519	666,111	28,876	10,885	4.3%	1.6%	37.7%	7,804	338	128
Northern Virginia: Virginia Ratio (NV/VA)		29.5%	27.4%	28.9%	21.2%						
Virginia Excluding Northern Virginia		6,014,986	483,689	20,533	8,574	4.2%	1.8%	41.8%	8,041	341	143

Source: Data, VDH COVID-19 Public Use Data Set-Cases, May 8, 2021, at <https://www.vdh.virginia.gov/coronavirus/>; Tabulations & Calculations, HSA NV

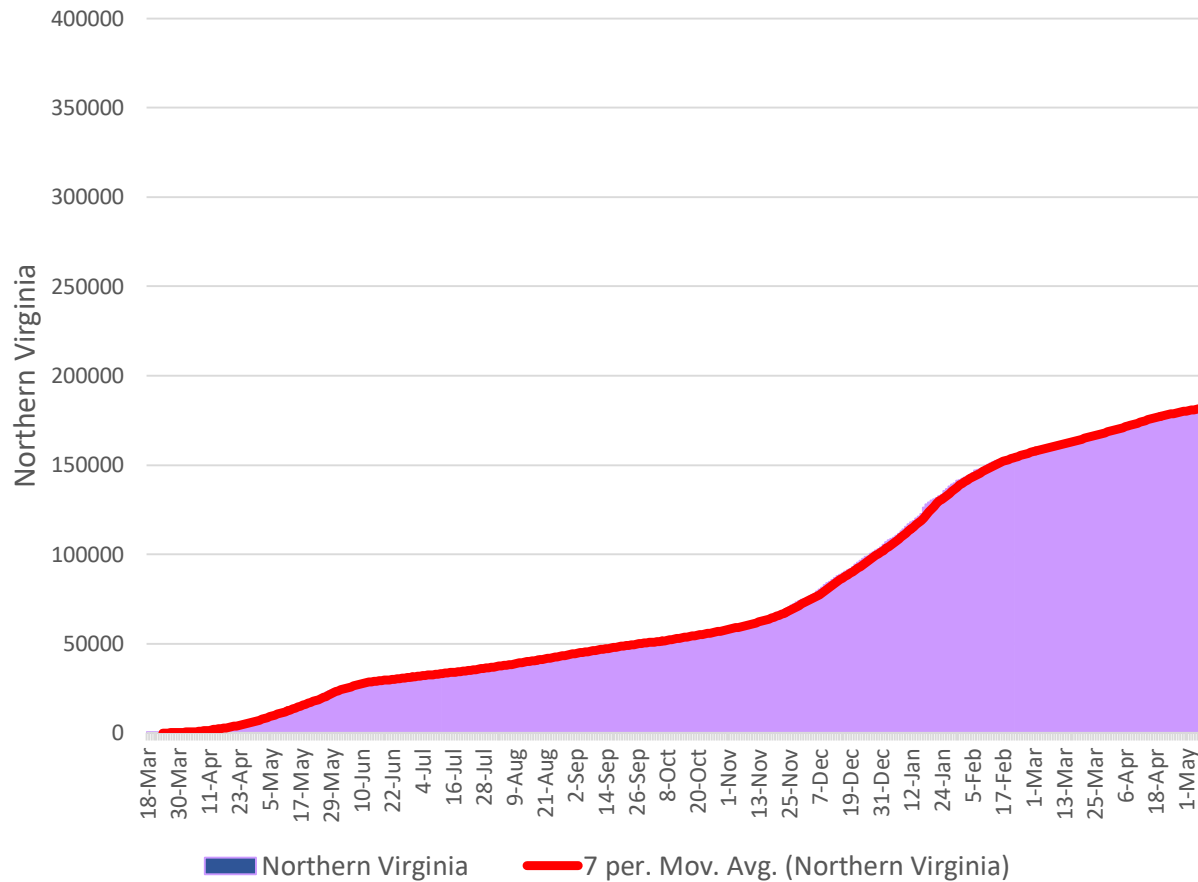
¹2019 Population Estimates, Weldon Cooper Center for Public Service at <https://demographics.coopercenter.org/virginia-population-estimates>

²Count of those testing positive for novel coronavirus. With limited testing, actual incidence and prevalence are not known.

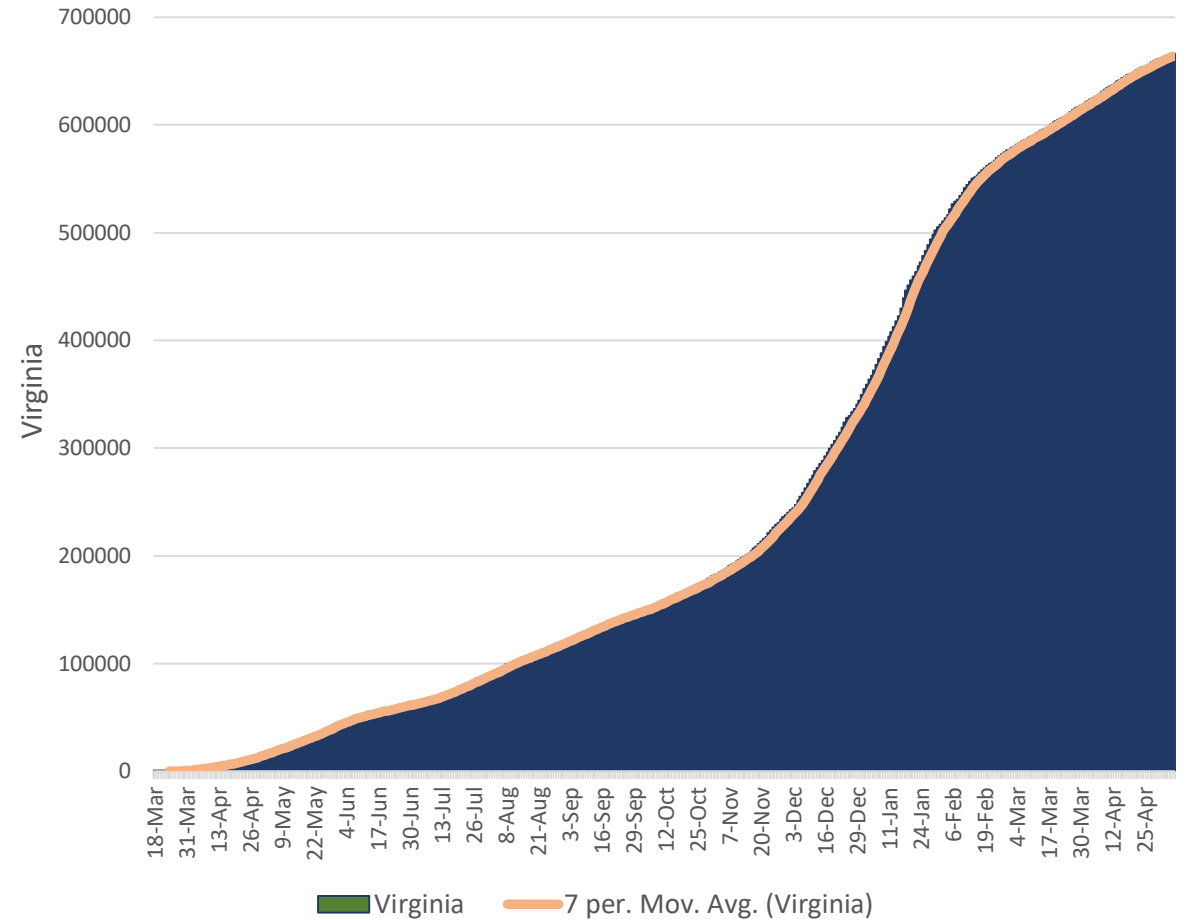
³Includes Fairfax City and Falls Church

⁴Includes Manassas and Manassas Park

Northern Virginia COVID-19 Cases, Cumulative March 18, 2020 – May 8, 2021

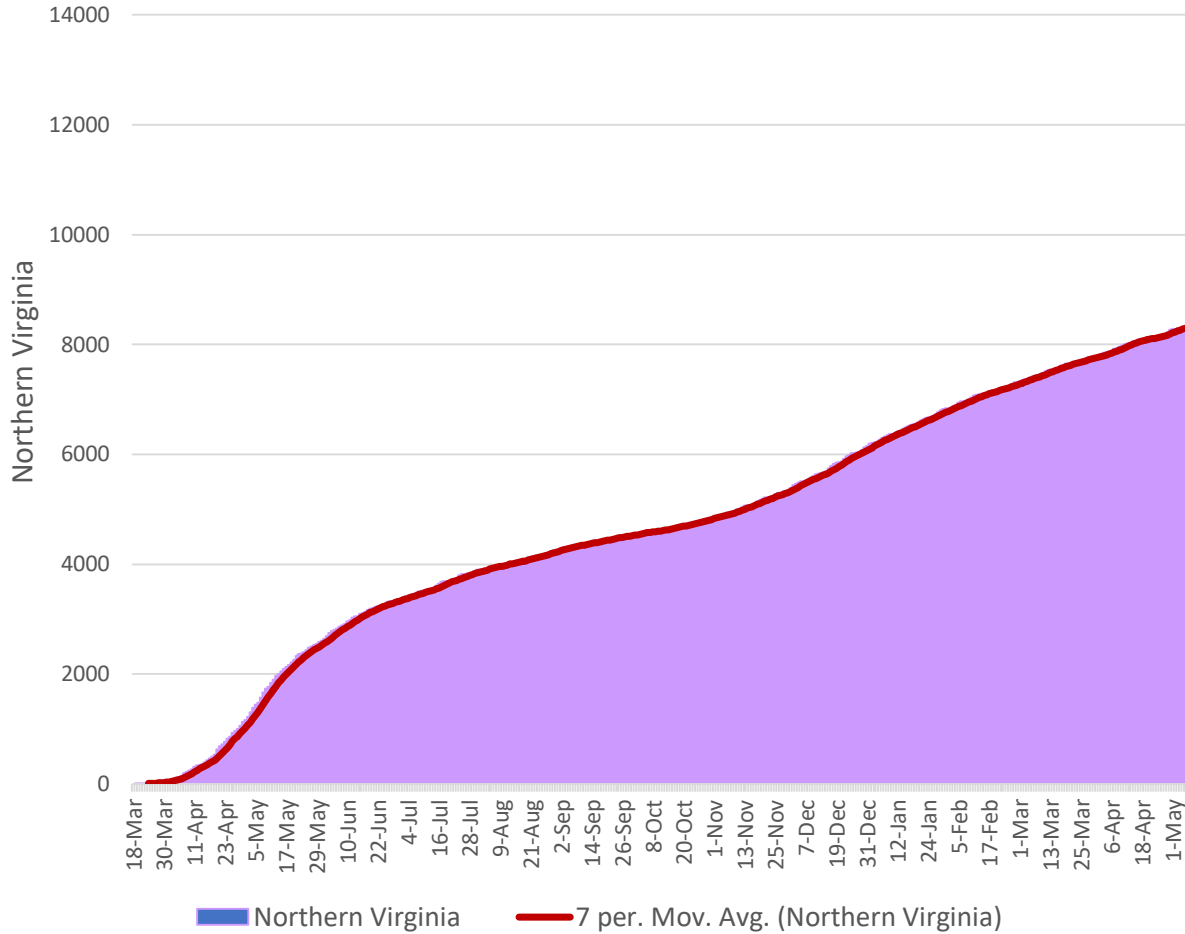


Virginia COVID-19 Cases, Cumulative March 18, 2020 – May 8, 2021

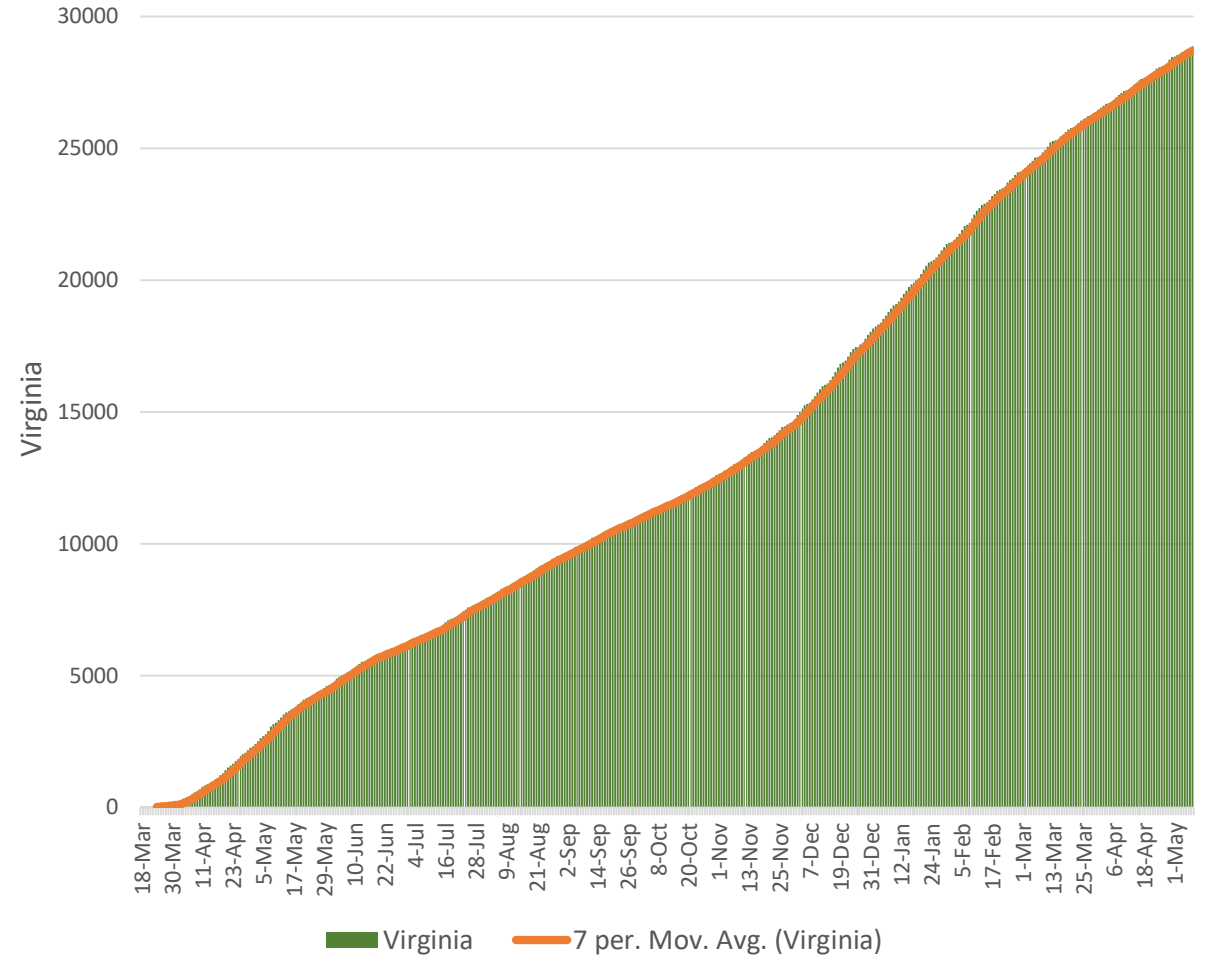


Source: VDH Covid-19 Public Use Dataset – Cases thru May 8, 2021 at <https://www.vdh.virginia.gov/coronavirus/Charts/Tabulations> HSNV Staff, 2021. 7 per = 7 Day Moving Average

Northern Virginia COVID-19 Hospitalizations, Cumulative March 18, 2020 – May 8, 2021

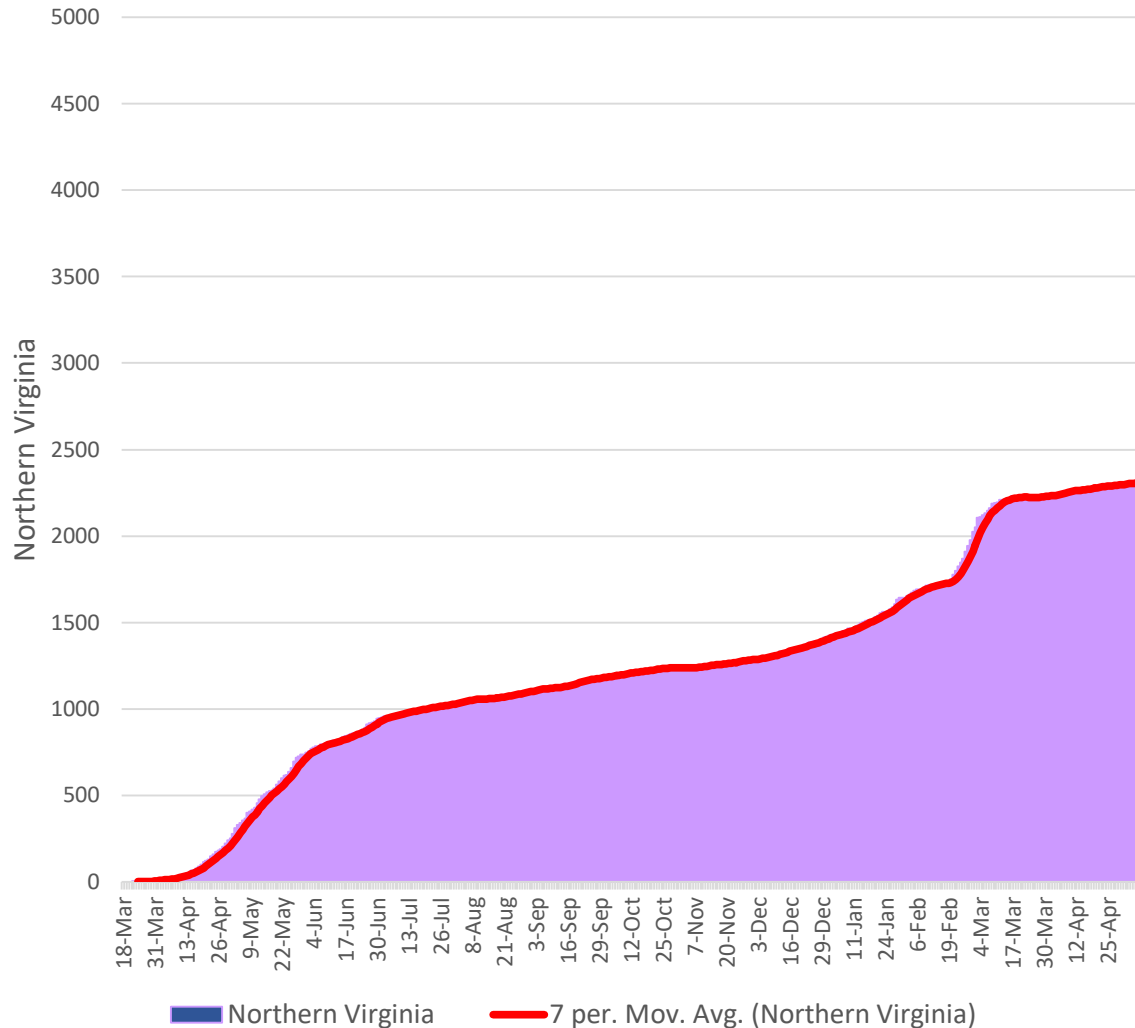


Virginia COVID-19 Hospitalizations, Cumulative March 18, 2020 – May 8, 2021

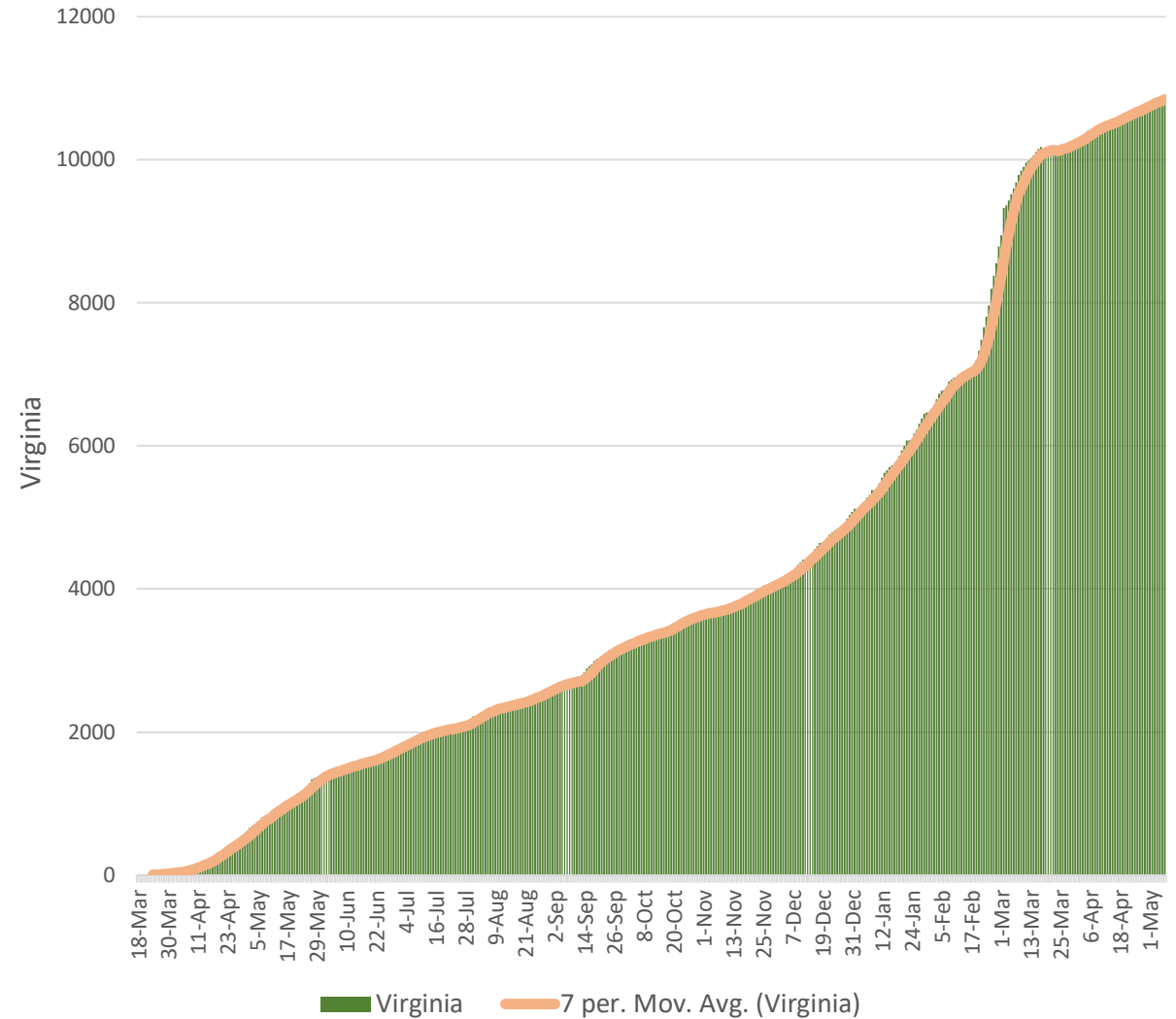


Source: VDH Covid-19 Public Use Dataset – Cases thru May 8, 2021 at <https://www.vdh.virginia.gov/coronavirus/>
Charts/Tabulations HSNV Staff, 2021. 7 per = 7 Day Moving Average

Northern Virginia COVID-19 Deaths, Cumulative March 18, 2020 – May 8, 2021

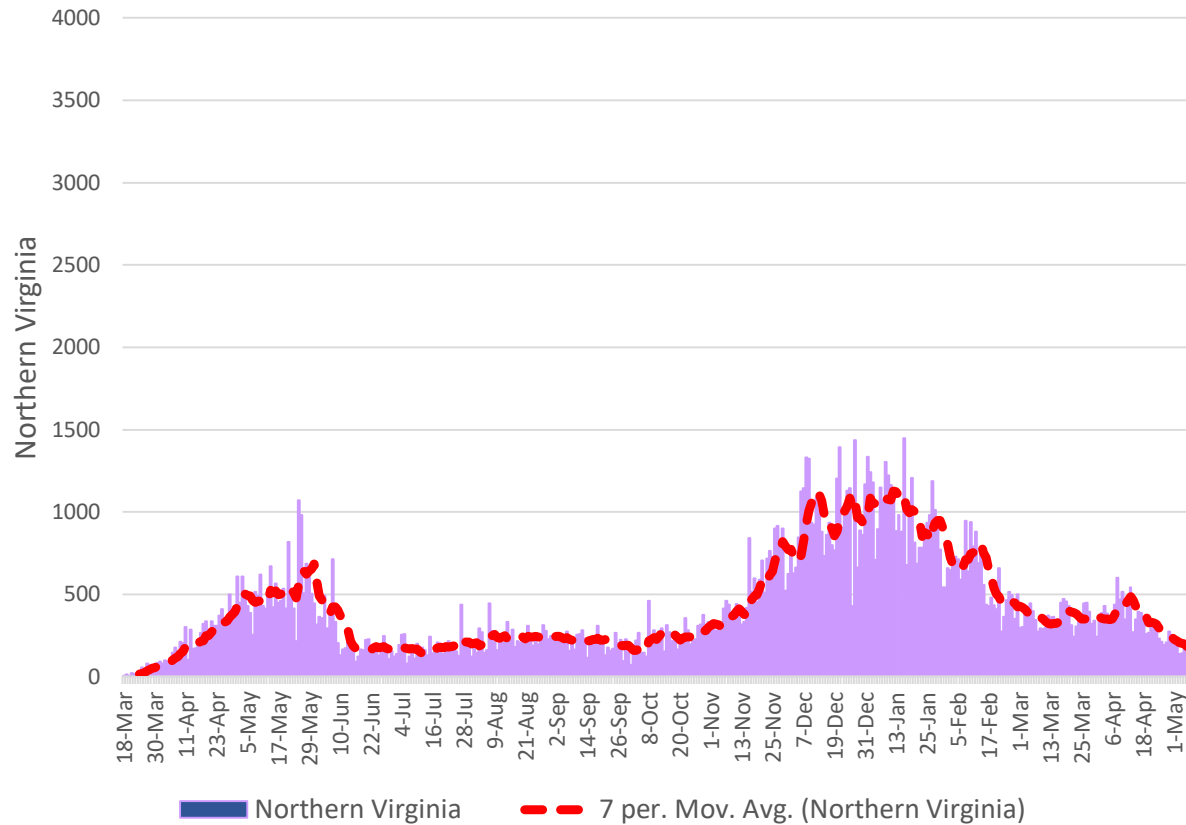


Virginia COVID-19 Deaths, Cumulative March 18, 2020 – May 8, 2021

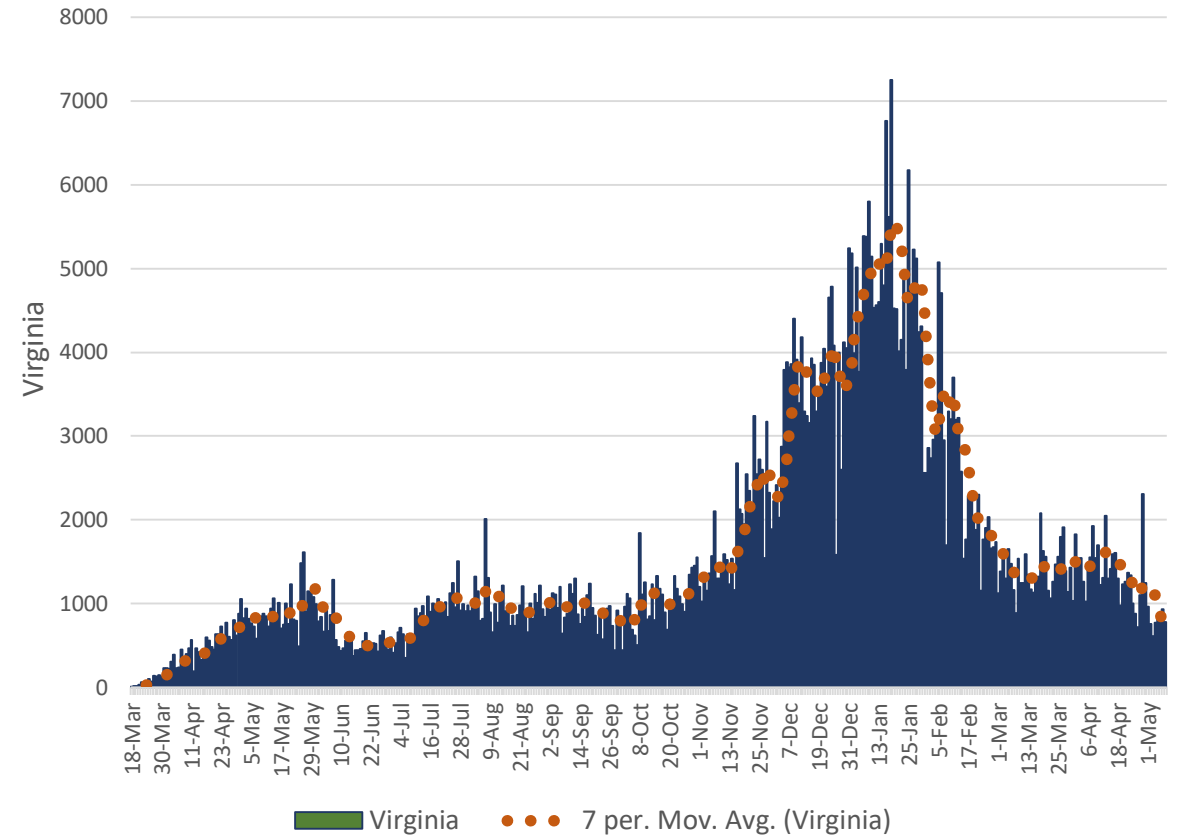


Source: VDH Covid-19 Public Use Dataset – Cases thru May 8, 2021 at <https://www.vdh.virginia.gov/coronavirus/>
Charts/Tabulations HSNV Staff, 2021. 7 per = 7 Day Moving Average

Northern Virginia Daily [New] Covid Cases March 18, 2020 - May 8, 2021

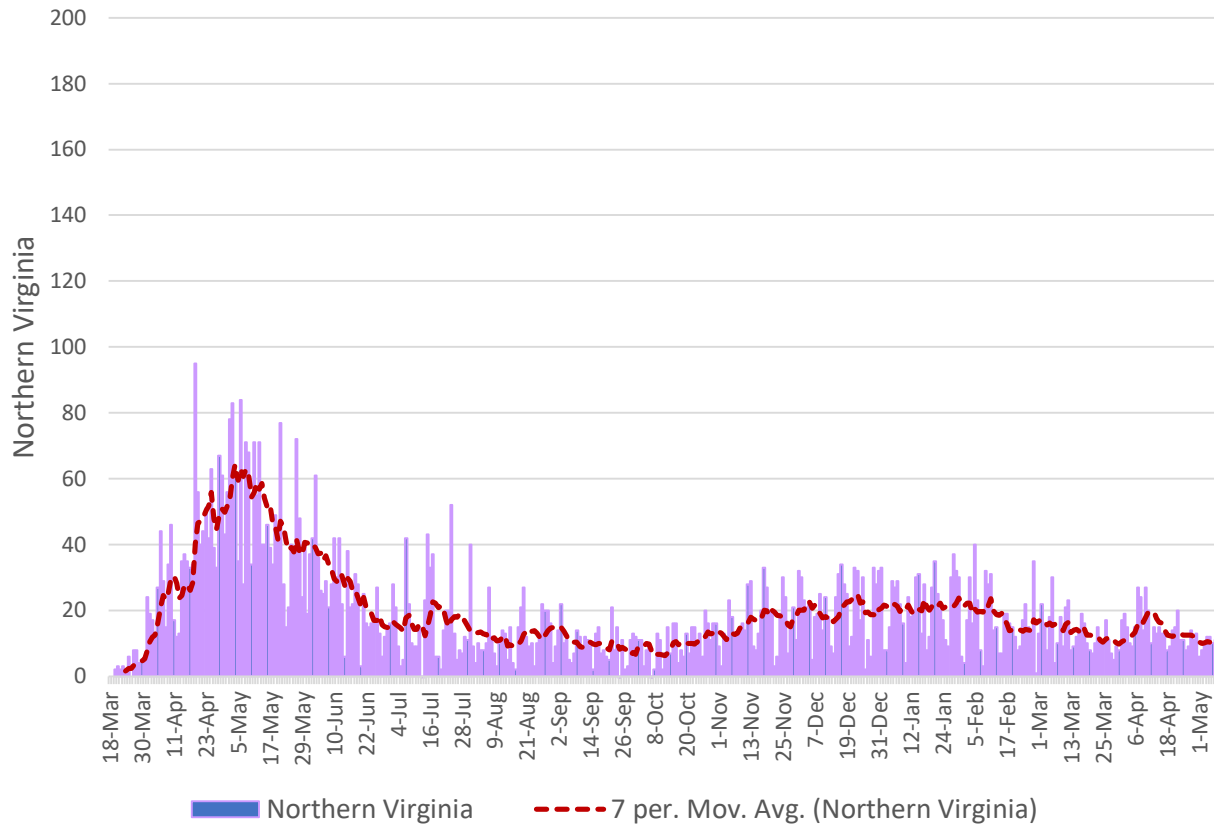


Virginia Daily [New] Covid Cases March 18, 2020 - May 8, 2021

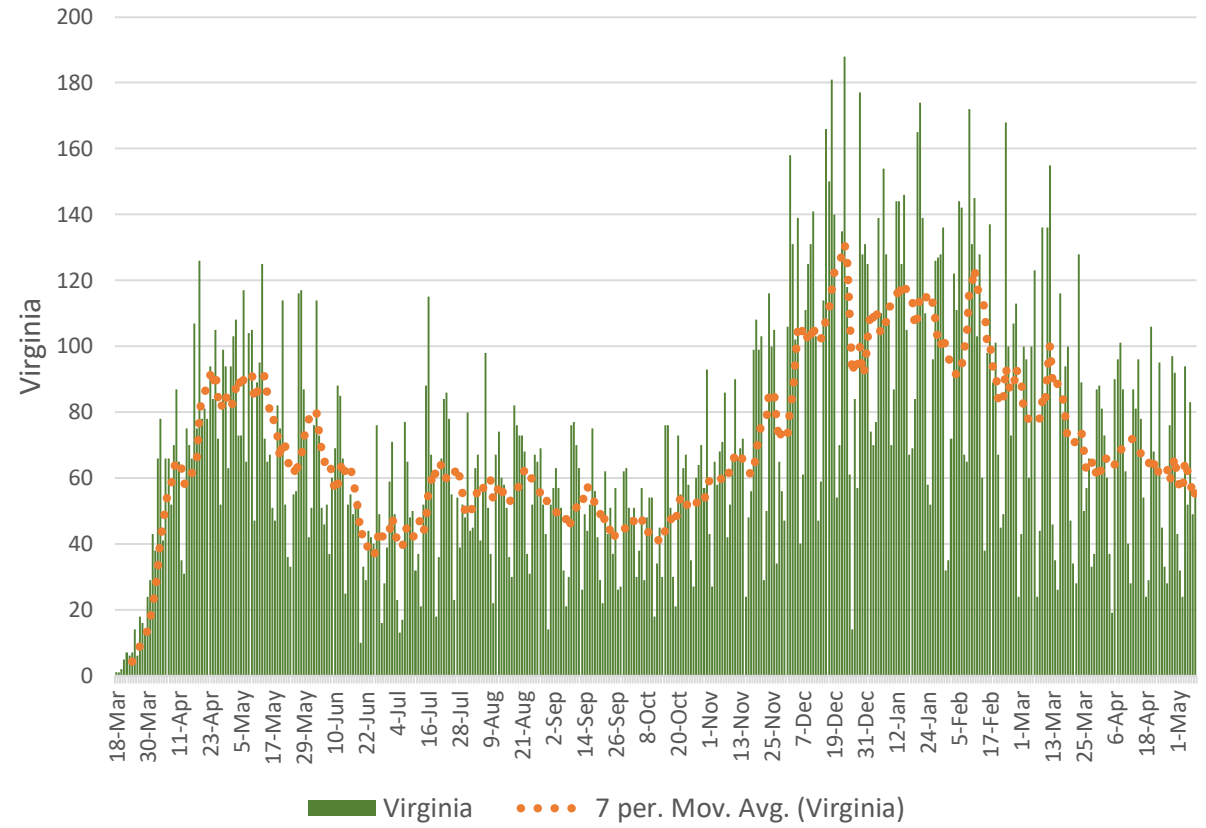


Source: VDH Covid-19 Public Use Dataset – Cases thru May 8, 2021 at <https://www.vdh.virginia.gov/coronavirus/>
Charts/Tabulations HSANV Staff, 2021. 7 per = 7 Day Moving Average

Northern Virginia COVID-19 Hospitalizations by Date Reported March 18, 2020 - May 8, 2021

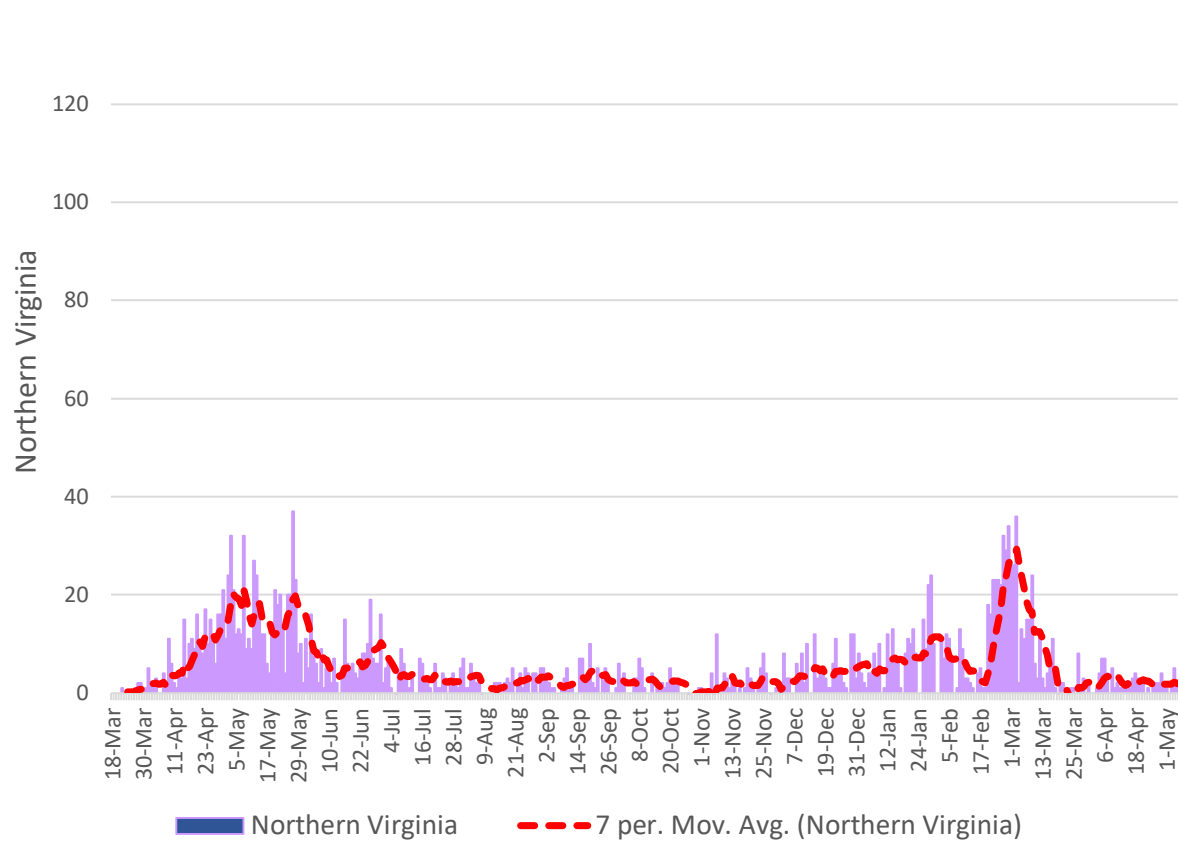


Virginia COVID-19 Hospitalizations by Date Reported March 18, 2020 - May 8, 2021

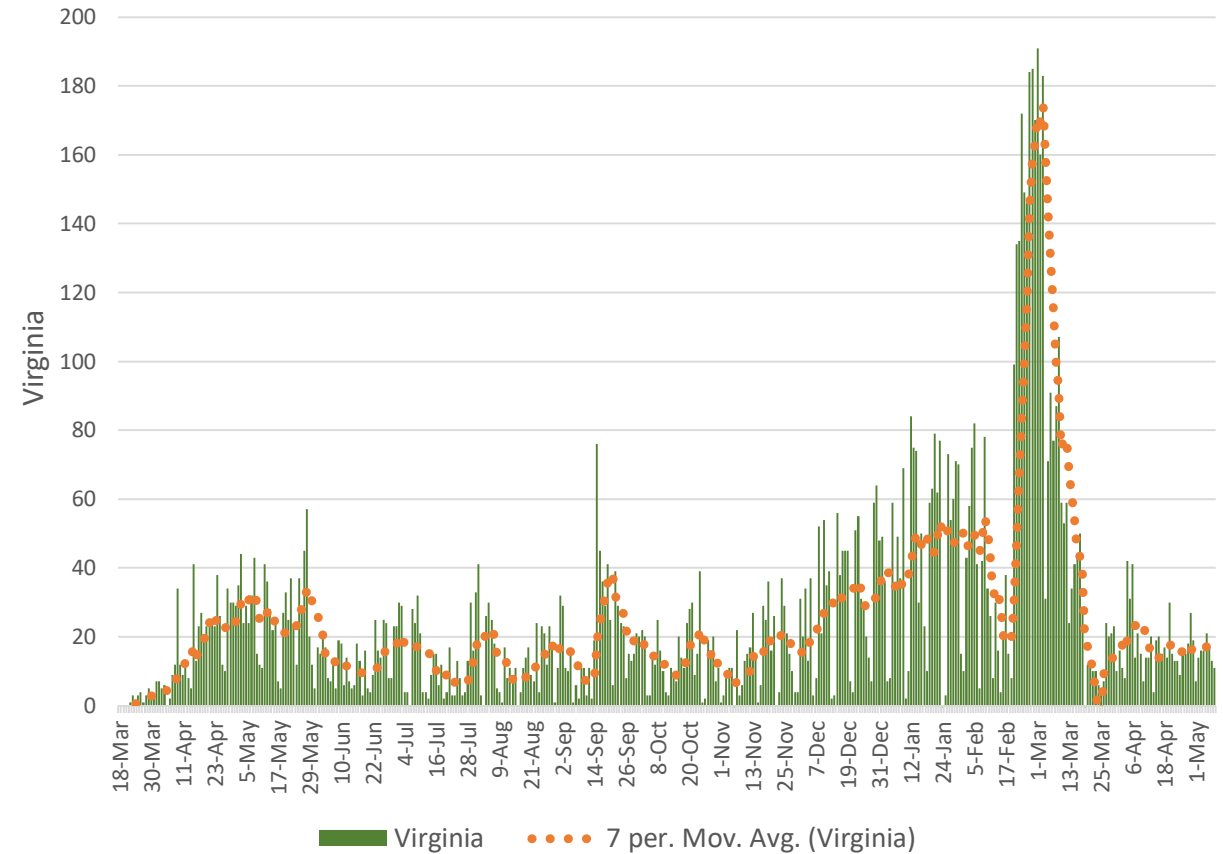


Source: VDH Covid-19 Public Use Dataset – Cases thru May 8, 2021 at <https://www.vdh.virginia.gov/coronavirus/>
Charts/Tabulations HSNV Staff, 2021. 7 per = 7 Day Moving Average

Northern Virginia COVID-19 Deaths by Date Reported March 18, 2020 - May 8, 2021

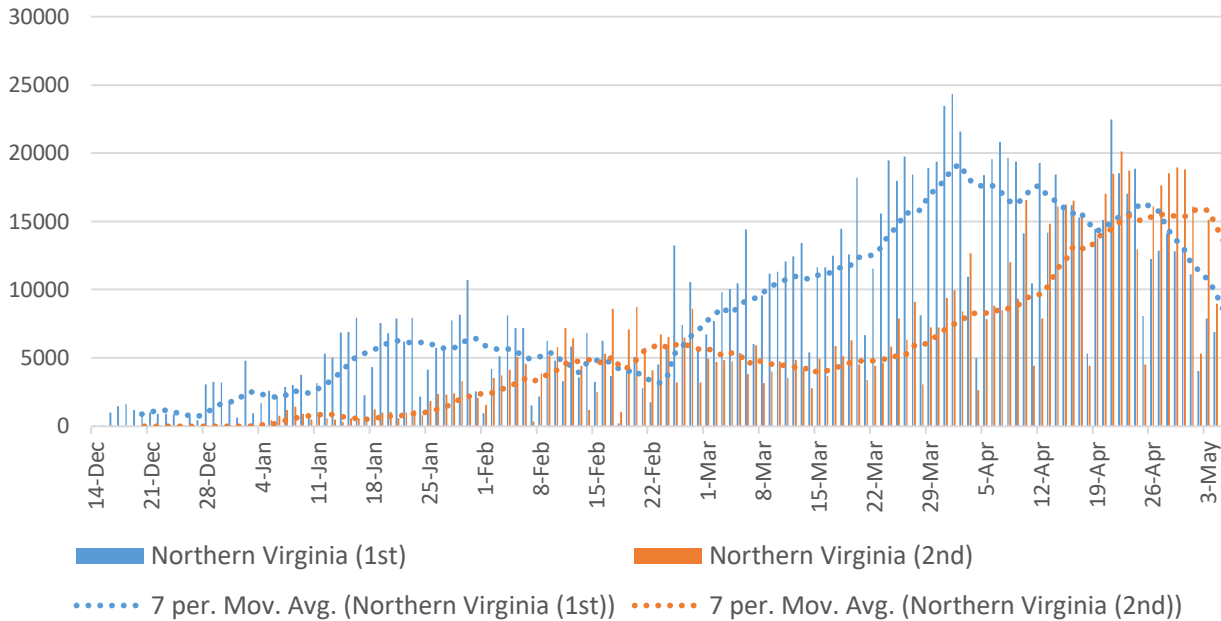


Virginia COVID-19 Deaths by Date Reported March 18, 2020 - May 8, 2021

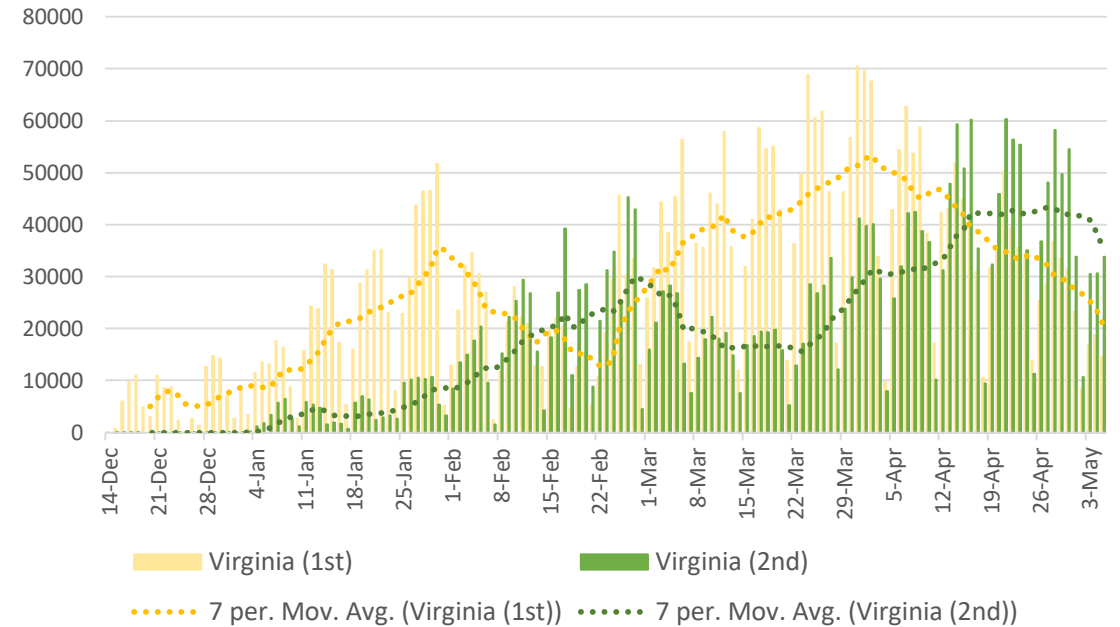


Source: VDH Covid-19 Public Use Dataset – Cases thru May 8, 2021 at <https://www.vdh.virginia.gov/coronavirus/>
 Charts/Tabulations HSNV Staff, 2021. 7 per = 7 Day Moving Average

Northern Virginia
 Covid-19 Vaccine 1st and 2nd Doses by Date
 Administered
 As of May 5, 2021

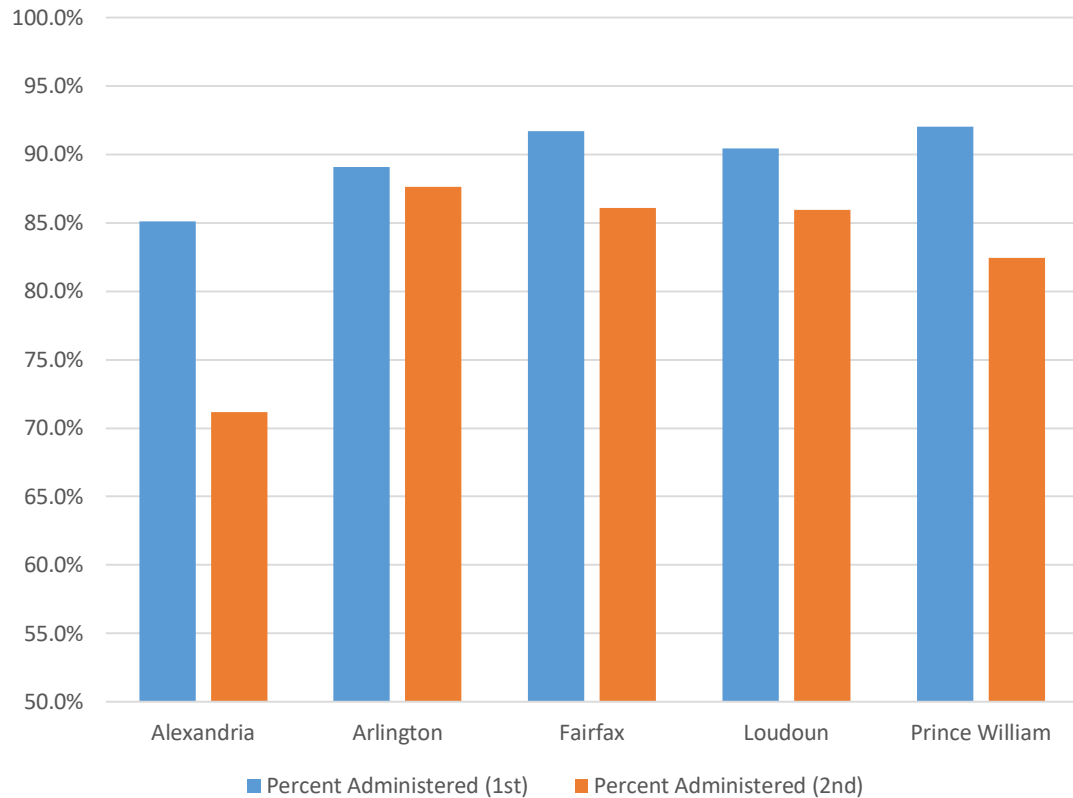


Virginia
 Covid-19 Vaccine 1st and 2nd Doses by Date
 Administered
 As of May 5, 2021

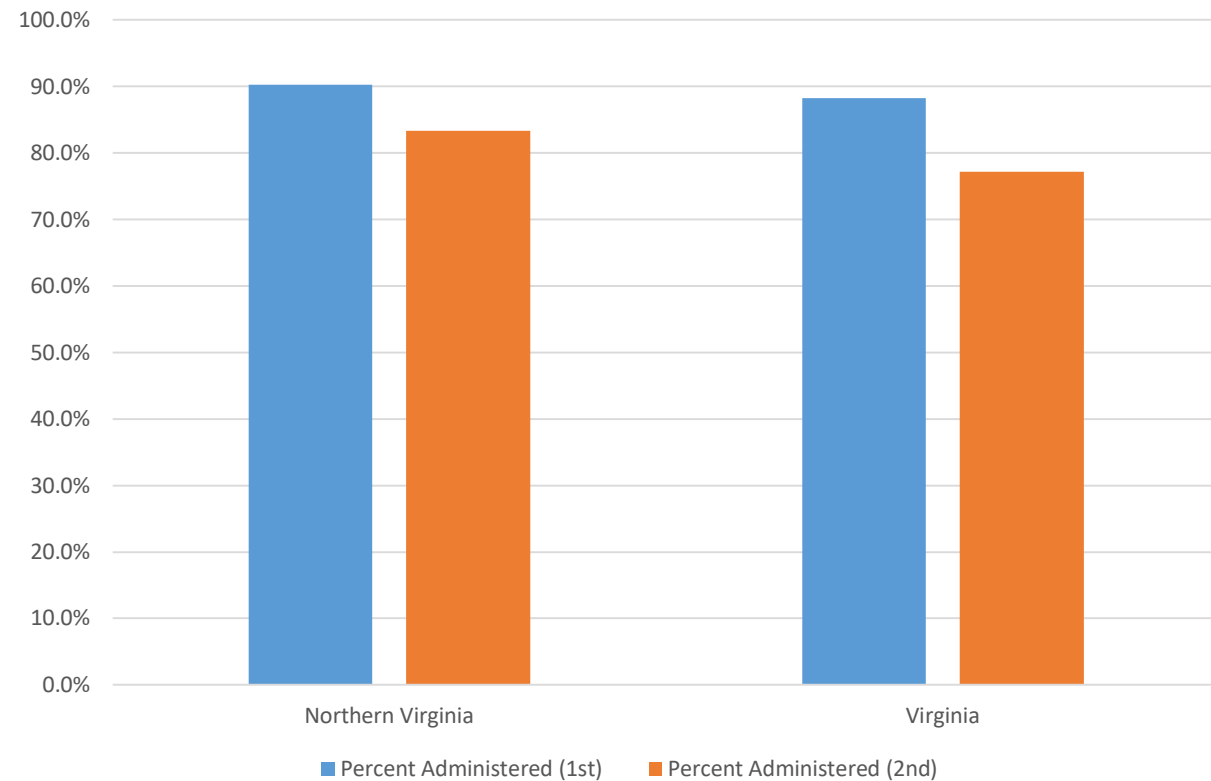


Source: VDH Covid-19 Public Use Dataset – May 8, 2021 at <https://www.vdh.virginia.gov/coronavirus/Charts/Tabulations> HSAHV Staff, 2021. 7 per = 7 Day Moving Average

Northern Virginia Health Districts
 Covid-19 Vaccine Doses Received and Administered
 As of May 5, 2021



Northern Virginia & Virginia
 Covid-19 Vaccine Doses Received and Administered
 As of May 5, 2021



Source: VDH Covid-19 Public Use Dataset – May 8, 2021 at <https://www.vdh.virginia.gov/coronavirus/Charts/Tabulations> HSNV Staff, 2021. 7 per = 7 Day Moving Average