

COVID-19: Northern Virginia & Virginia

August 5, 2022

Contents

- **Summary Table: Documented Cases, Hospitalizations, Deaths, 3/18/2020 – 8/5/2022**
 - Virginia, Northern Virginia, Northern Virginia Jurisdictions
- **COVID-19 Cases Charts, Northern Virginia & Virginia, 3/18/2020 – 8/5/2022**
 - Cumulative and Daily
- **COVID-19 Hospitalization Charts. Northern Virginia & Virginia, 3/18/2020 – 8/5/2022**
 - Cumulative and Daily
- **COVID-19 Death Charts, Northern Virginia & Virginia, 3/18/2020 – 8/5/2022**
 - Cumulative and Daily
- **COVID-19 Immunization: Vaccinations, Northern Virginia, Virginia, 8/5/2022**

COVID-19 Data, Charts Northern Virginia & Virginia

August 5, 2022

Context: Data Limitations

- COVID-19 data summarized in the table and charts below comes from the public use database maintained by the Virginia Department of Health. The table (Slide 3) combines Falls Church and Fairfax City data with that of Fairfax County and data for Manassas and Manassas Park with that of Prince William County.
- Case counts are of those who have tested positive for the coronavirus. Testing levels and protocols, and the data generated, are not sufficient to determine actual levels of exposure and infection or to calculate reliably the incidence or prevalence of the disease locally or statewide. The undercount and associated uncertainty necessarily limits the value of the ratios and rates that we have derived, but combined with the data and charts distributed over the last 28 months they give a useful view of Virginia and Northern Virginia trends, as well as of regional differences in infection levels, hospitalizations and mortality.
- Hospitalization counts are more reliable, but that data too has limitations. For example the source of admission for COVID-19 hospital cases is not available. One cannot determine reliably the number of cases referred to hospitals from nursing homes, assisted living facilities or other congregate living settings. The published data does not permit linkage between sites where infection and treatment occur.
- Intrastate variation in COVID-19 exposure and documented infection, hospitalization and mortality have changed dramatically over the last two years. During the early months of the epidemic they were much higher in Northern Virginia than elsewhere in the state. That has changed steadily since mid 2020. The early difference between Northern Virginia (PD 8) and the rest of state diminished as the epidemic spread more widely. Rather than more than one-half of Virginia's documented cases, hospitalizations and deaths reported during the early months of the epidemic, Northern Virginia (PD8) now has notably lower documented COVID-19 case, hospitalization and death rates than elsewhere in Virginia. The crude hospitalization rate (COVID-19 hospitalizations per 100,000 population) now is about 74% of the average rate reported for the rest of Virginia. The reported COVID-19 crude death rate (deaths per 100,000 population) is now less than half (about 46%) the average reported rate for the rest of Virginia.
- The information presented below should be considered descriptive. The data, and the derived ratios and rates presented are illustrative, not definitive. They are informative nevertheless.
- COVID-19 data, and related information, for Virginia residents and medical services and facilities statewide is available at: <https://www.vdh.virginia.gov/coronavirus/>
- Let us know if you have questions, find errors, or would like to discuss any of the data presented here.

| COVID-19, Northern Virginia, Virginia Cases, Hospitalizations, Deaths (Cumulative as of August 5, 2022) | | | | | | | | | | | |
|--|---------------------|-------------------------|-------------------------------|------------------|--------|------------------------|---------------------|--------------------|-------------------------------|---|-------------------------------|
| Jurisdiction | VDH Health District | Population ¹ | <u>Counts</u> | | | <u>COVID-19 Ratios</u> | | | <u>Population Based Rates</u> | | |
| | | | Documented Cases ² | Hospitalizations | Deaths | Ratio: Hosp/Cases | Ratio: Deaths/Cases | Ratio: Deaths/Hosp | Cases per 100,000 Population | Hospitalizations per 100,000 Population | Deaths per 100,000 Population |
| Alexandria | Alexandria | 159,142 | 39,581 | 792 | 196 | 2.0% | 0.5% | 24.7% | 24,871 | 498 | 123 |
| Arlington County | Arlington | 242,152 | 57,666 | 1,178 | 328 | 2.0% | 0.6% | 27.8% | 23,814 | 486 | 135 |
| Fairfax County ³ | Fairfax | 1,181,802 | 229,493 | 4,809 | 1,576 | 2.1% | 0.7% | 32.8% | 19,419 | 407 | 133 |
| Loudoun County | Loudoun | 413,546 | 84,509 | 1,670 | 402 | 2.0% | 0.5% | 24.1% | 20,435 | 404 | 97 |
| Prince William County ⁴ | Prince William | 523,891 | 126,065 | 4,082 | 864 | 3.2% | 0.7% | 21.2% | 24,063 | 779 | 165 |
| Northern Virginia (PD 8) Total | | 2,520,533 | 537,314 | 12,531 | 3,366 | 2.3% | 0.6% | 26.9% | 21,317 | 497 | 134 |
| Virginia Total | | 8,535,519 | 1,975,007 | 54,240 | 21,054 | 2.7% | 1.1% | 38.8% | 23,139 | 635 | 247 |
| Northern Virginia: Virginia Ratio (NV/VA) | | 29.5% | 27.2% | 23.1% | 16.0% | 84.9% | 58.8% | 69.2% | 92.1% | 78.2% | 54.1% |
| Virginia Excluding Northern Virginia | | 6,014,986 | 1,437,693 | 41,709 | 17,688 | 2.9% | 1.2% | 42.4% | 23,902 | 693 | 294 |

Source: Data, VDH COVID-19 Public Use Data Set-Cases, August 5,2022, at <https://www.vdh.virginia.gov/coronavirus/>; Tabulations & Calculations, HSANV

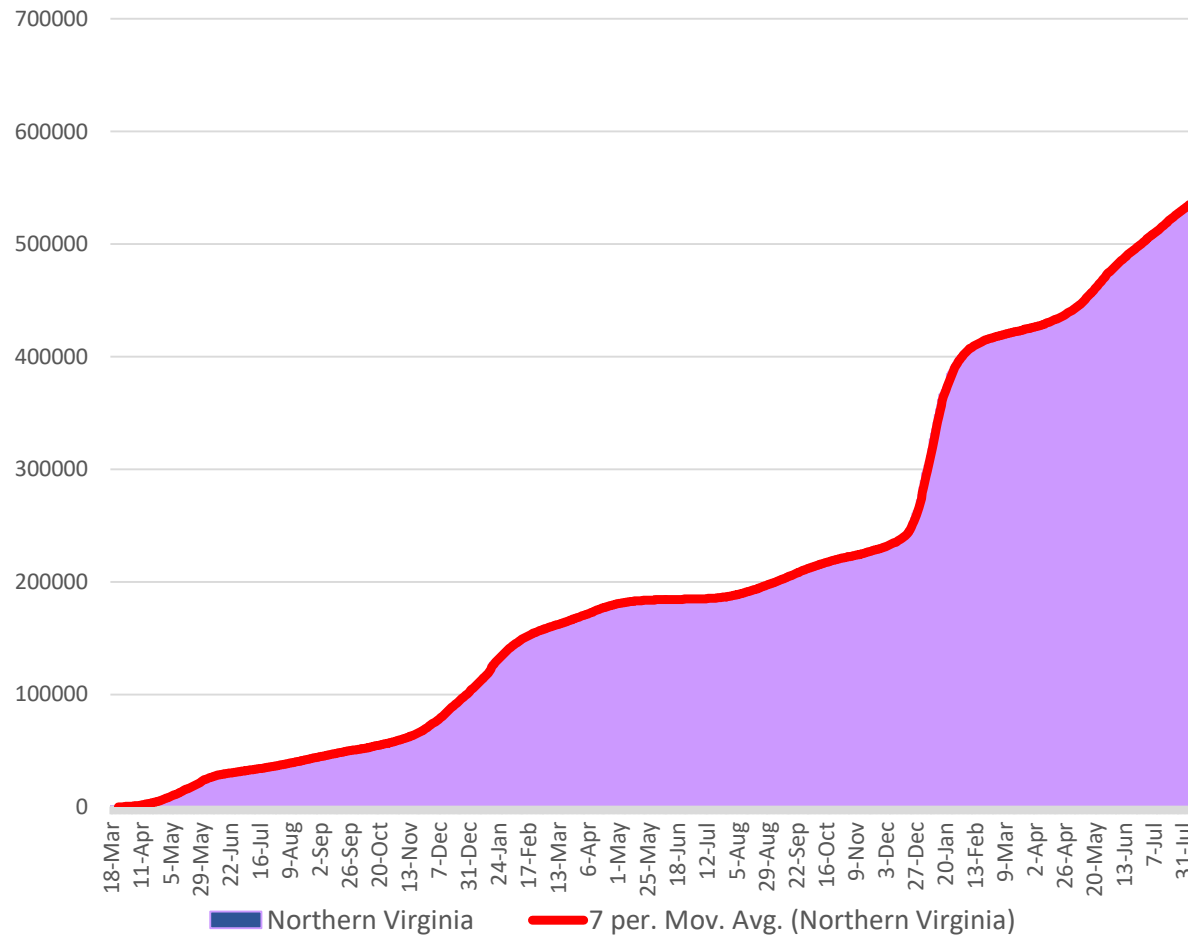
¹Population Estimates, Weldon Cooper Center for Public Service at <https://demographics.coopercenter.org/virginia-population-estimates>

²Count of those testing positive for novel coronavirus. With limited testing, actual incidence and prevalence are not known.

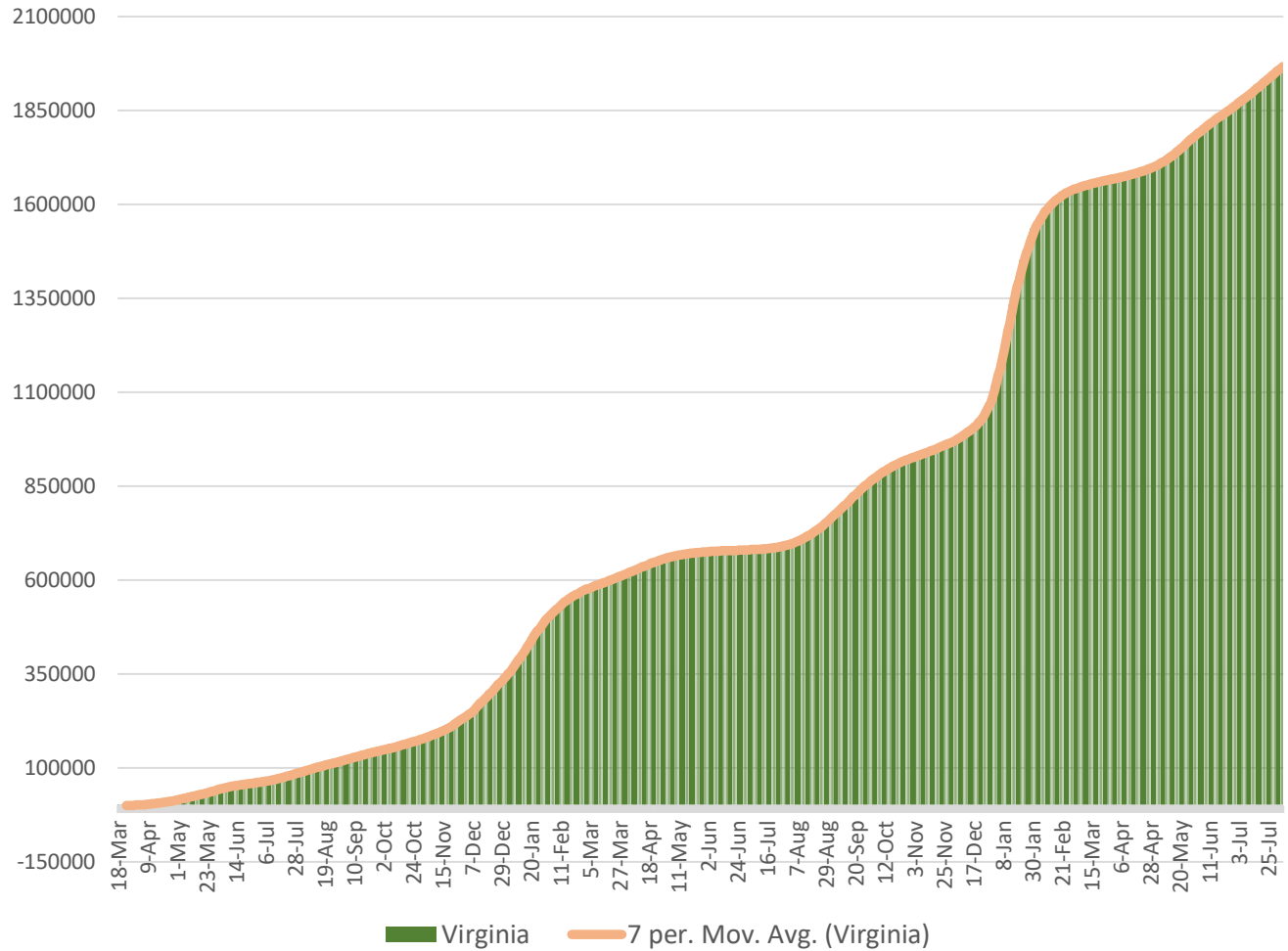
³Includes Fairfax City and Falls Church

⁴Includes Manassas and Manassas Park

Northern Virginia COVID-19 Cases, Cumulative March 18, 2020 – August 5, 2022

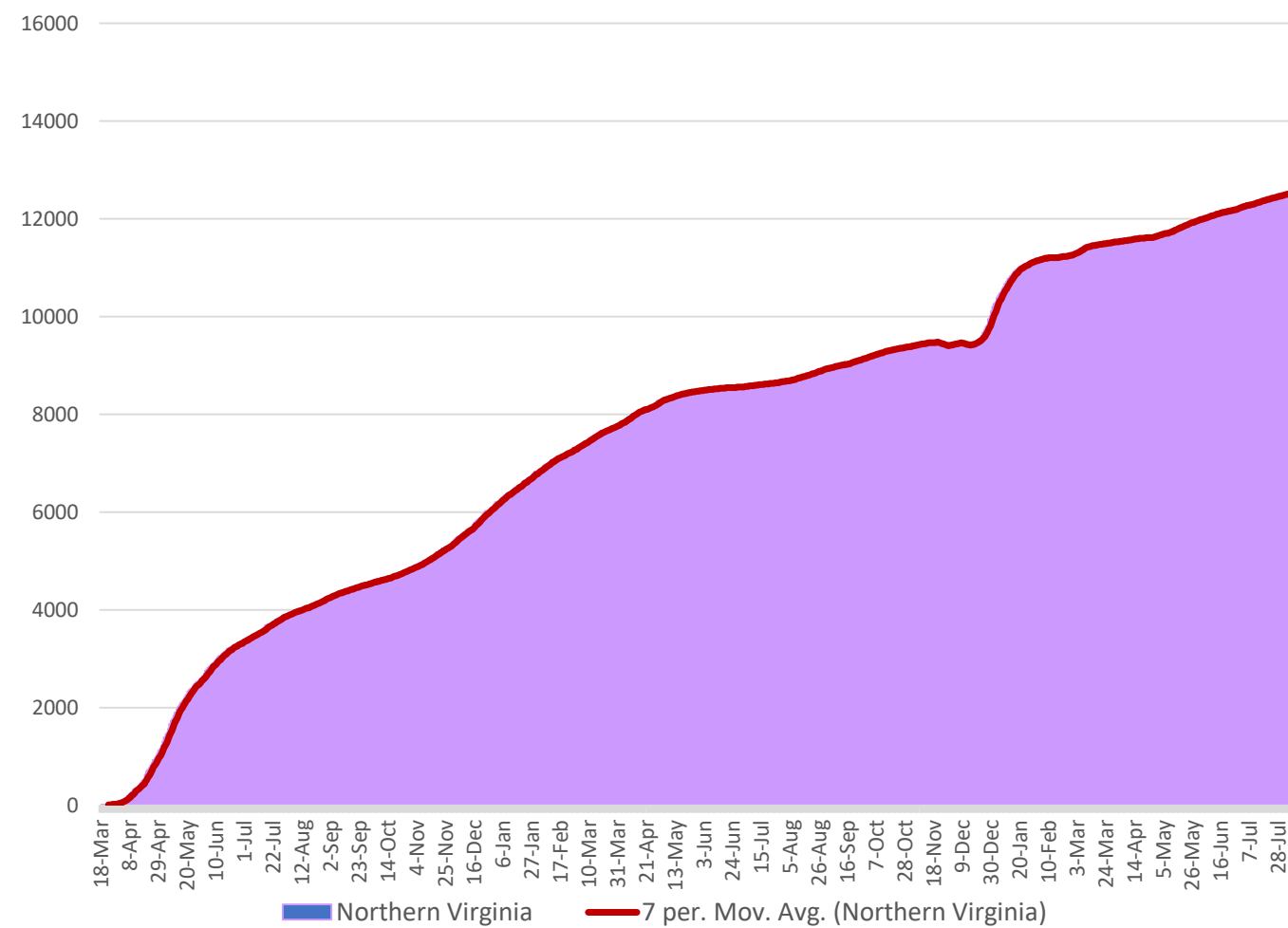


Virginia COVID-19 Cases, Cumulative March 18, 2020 – August 5, 2022

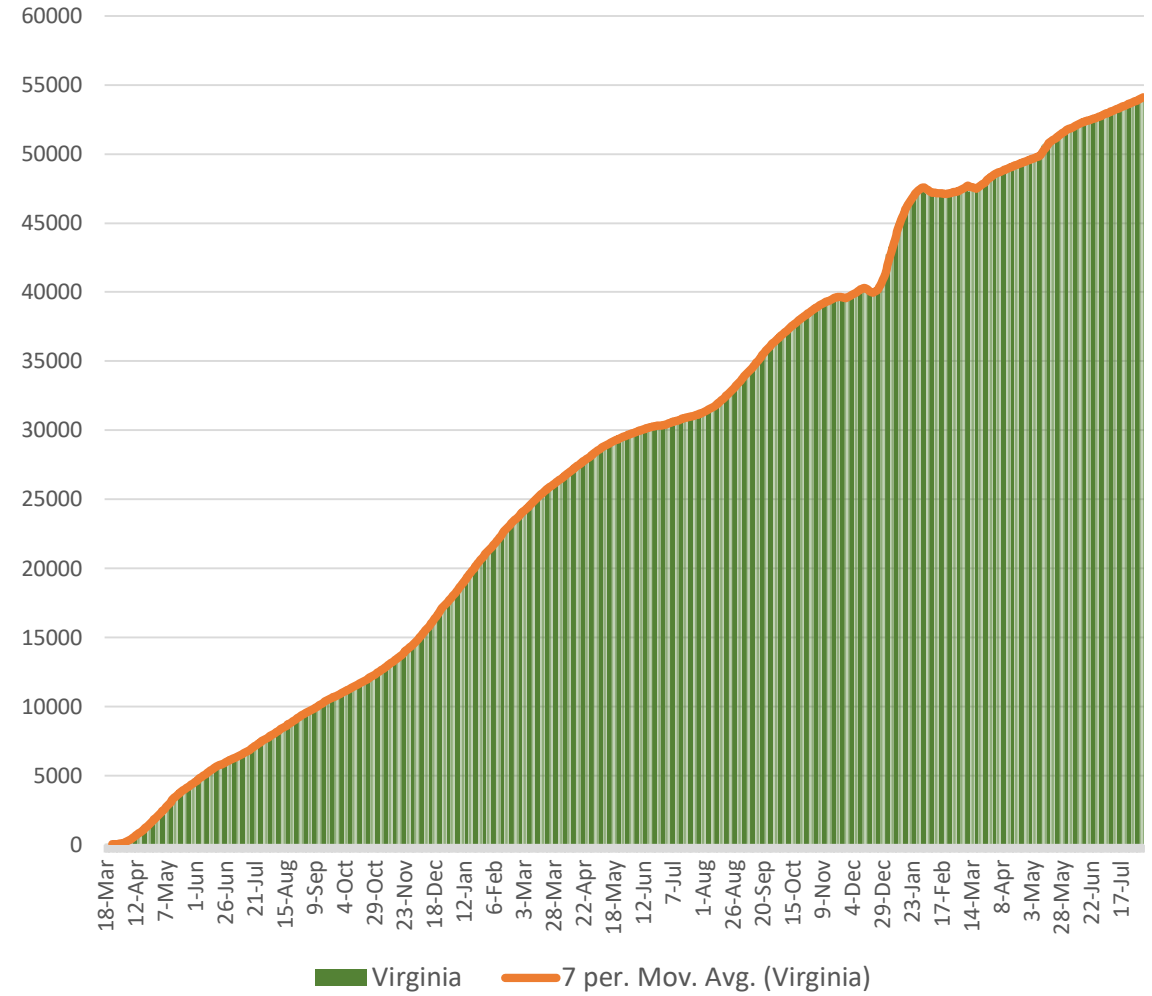


Source: VDH Covid-19 Public Use Dataset – Cases thru August 5, 2022 at <https://www.vdh.virginia.gov/coronavirus/Charts/Tabulations> HSANV Staff, 2022. 7 per = 7 Day Moving Average

Northern Virginia COVID-19 Hospitalizations, Cumulative March 18, 2020 – August 5, 2022

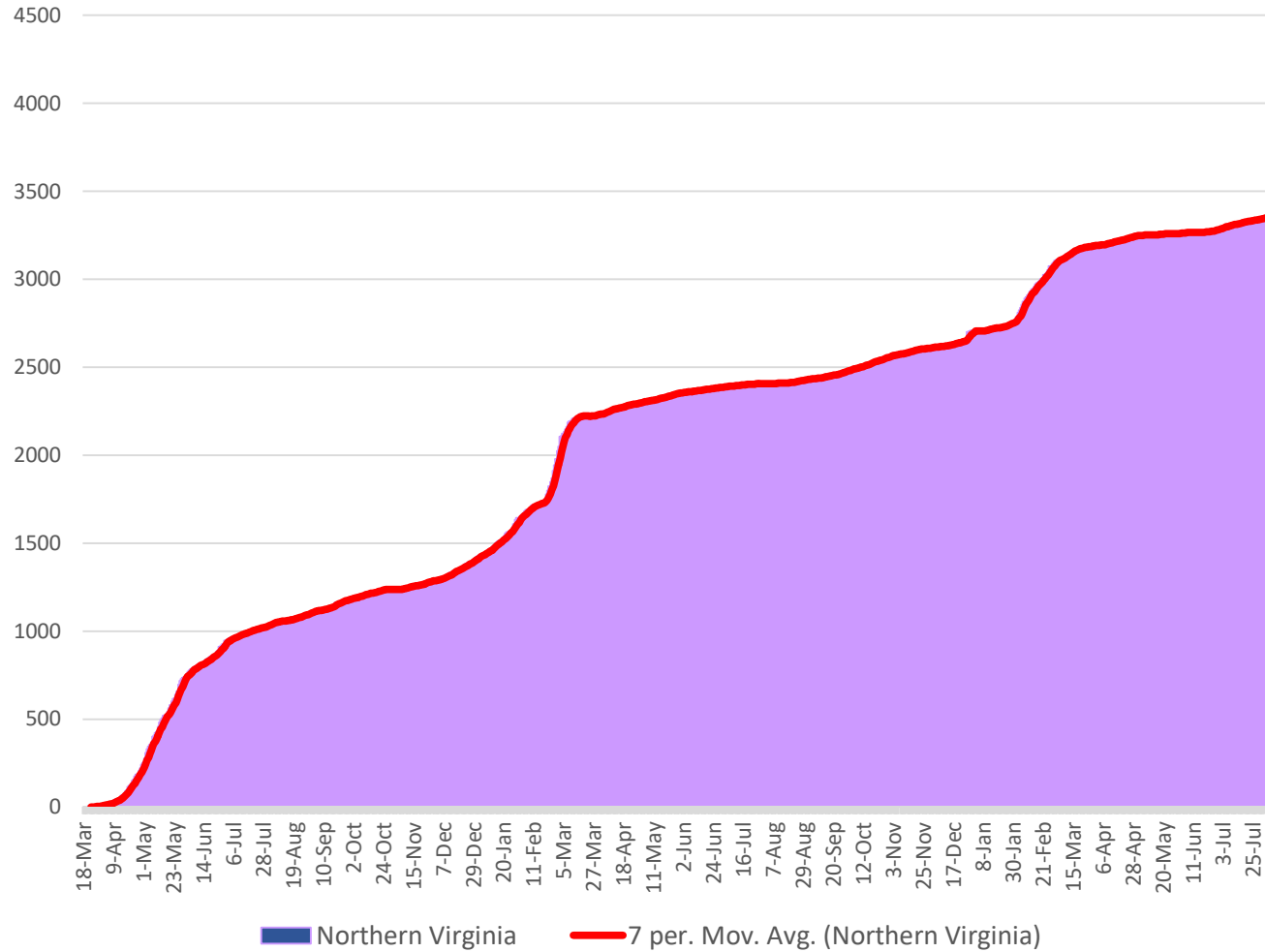


Virginia COVID-19 Hospitalizations, Cumulative March 18, 2020 – August 5, 2022

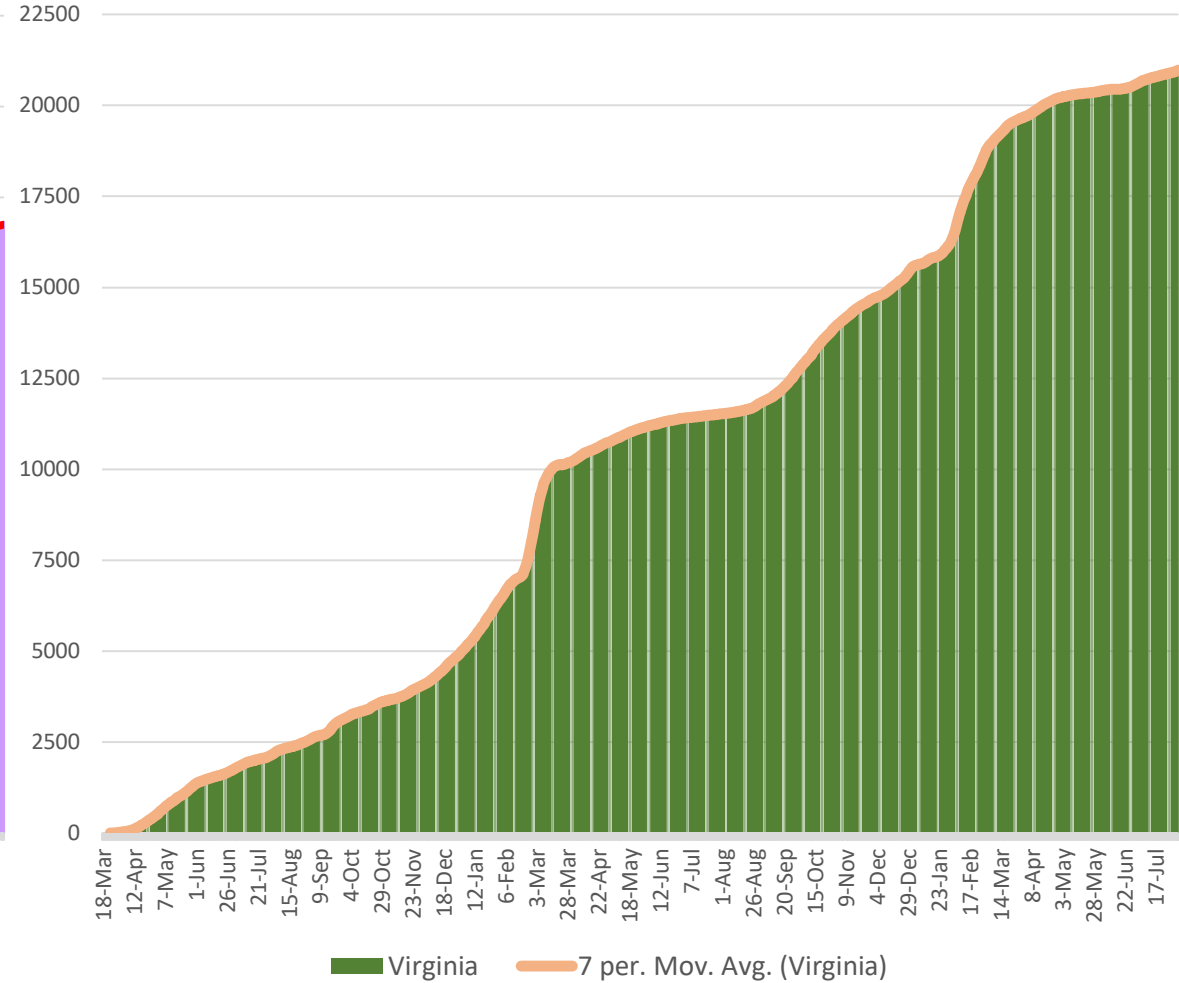


Source: VDH Covid-19 Public Use Dataset – Cases thru August 5, 2022 at <https://www.vdh.virginia.gov/coronavirus/Charts/Tabulations> HSNV Staff, 2022. 7 per = 7 Day Moving Average

Northern Virginia COVID-19 Deaths, Cumulative March 18, 2020 – August 5, 2022

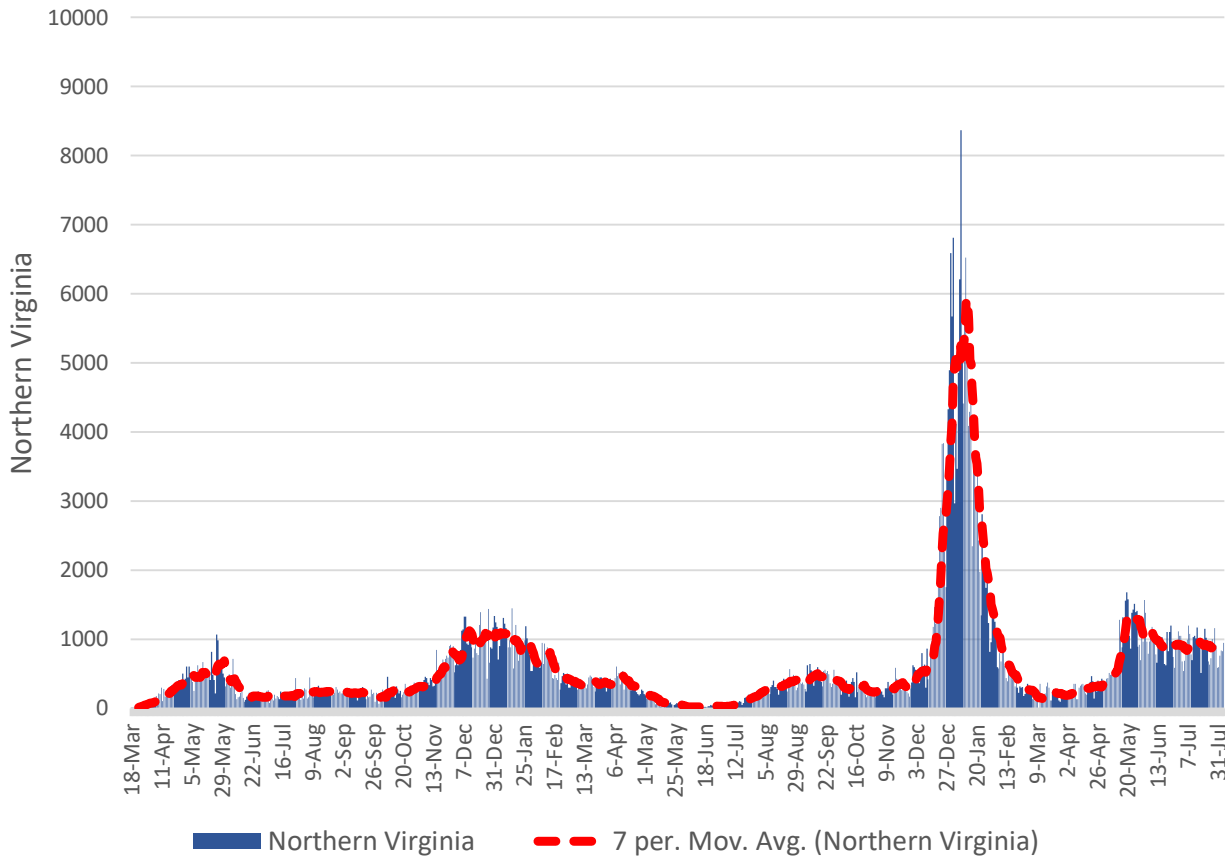


Virginia COVID-19 Deaths, Cumulative March 18, 2020 – August 5, 2022

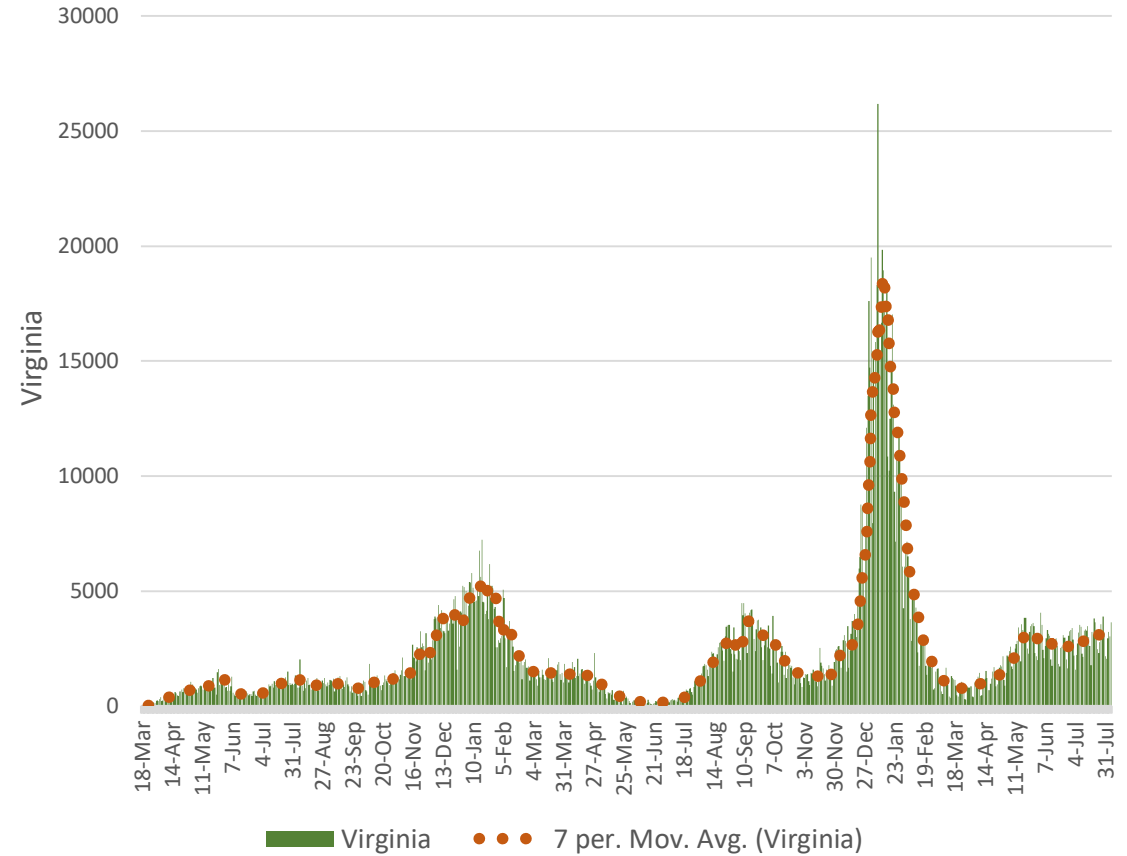


Source: VDH Covid-19 Public Use Dataset – Cases thru August 5, 2022 at <https://www.vdh.virginia.gov/coronavirus/Charts/Tabulations> HSNV Staff, 2022. 7 per = 7 Day Moving Average

Northern Virginia Daily [New] Covid Cases March 18, 2020 - August 5, 2022

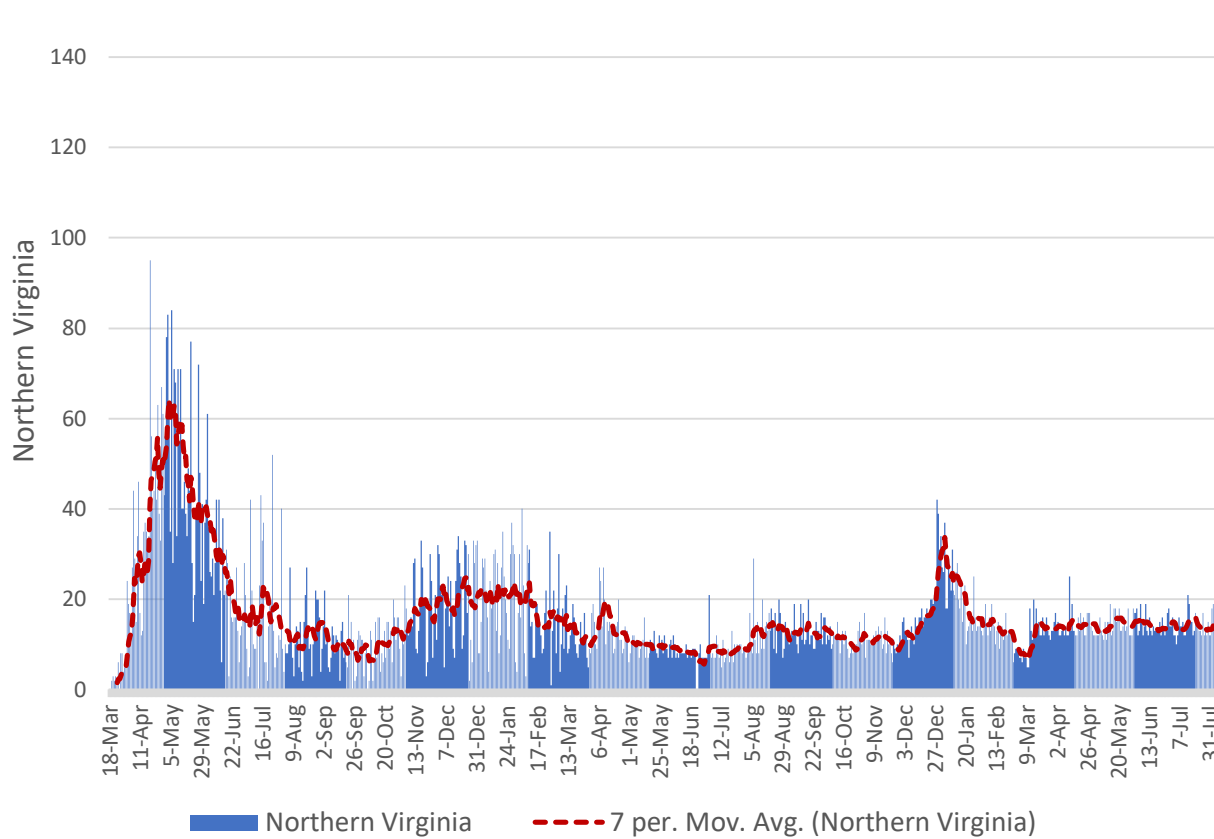


Virginia Daily [New] Covid Cases March 18, 2020 - August 5, 2022

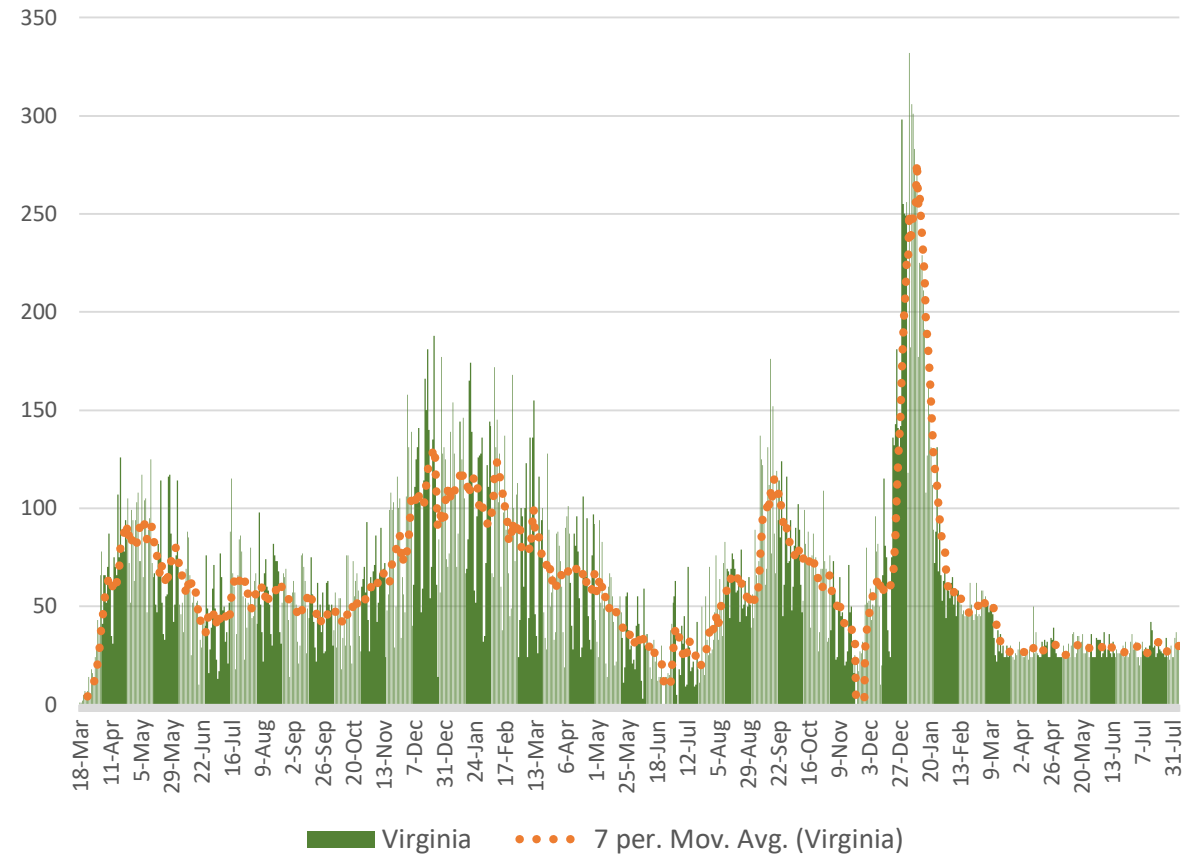


Source: VDH Covid-19 Public Use Dataset – Cases thru August 5, 2022 at <https://www.vdh.virginia.gov/coronavirus/Charts/Tabulations> HSANV Staff, 2022. 7 per = 7 Day Moving Average

Northern Virginia COVID-19 Hospitalizations by Date Reported March 18, 2020 - August 5, 2022

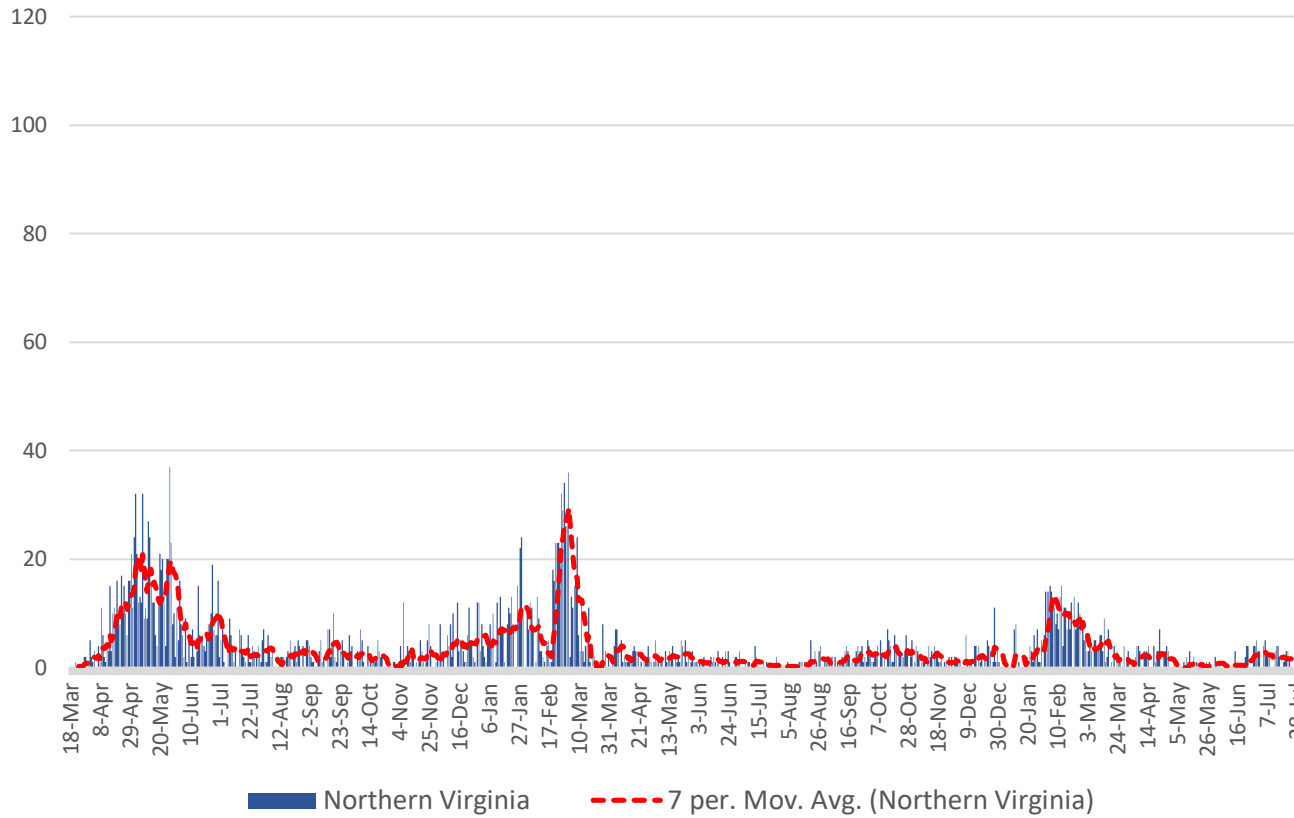


Virginia COVID-19 Hospitalizations by Date Reported March 18, 2020 - August 5, 2022

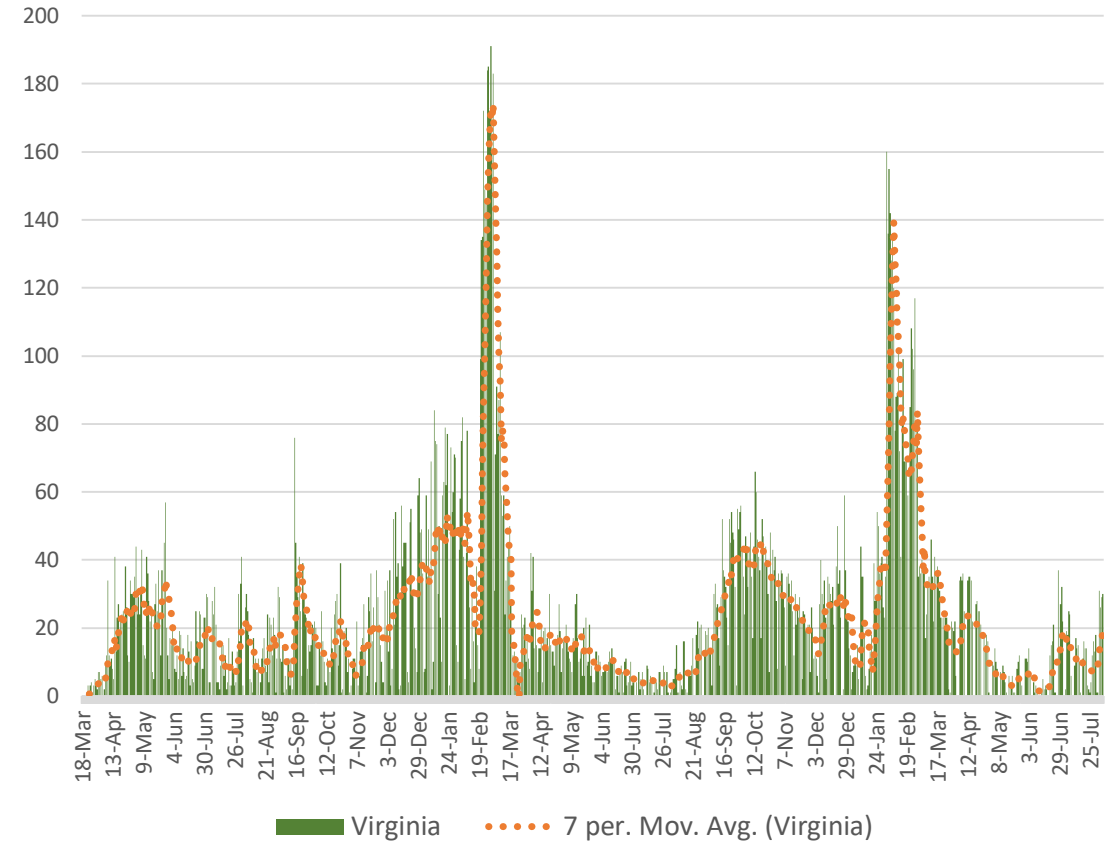


Source: VDH Covid-19 Public Use Dataset – Cases thru August 5, 2022 at <https://www.vdh.virginia.gov/coronavirus/>
Charts/Tabulations HSNV Staff, 2022. 7 per = 7 Day Moving Average

Northern Virginia COVID-19 Deaths by Date Reported March 18, 2020 - August 5, 2022

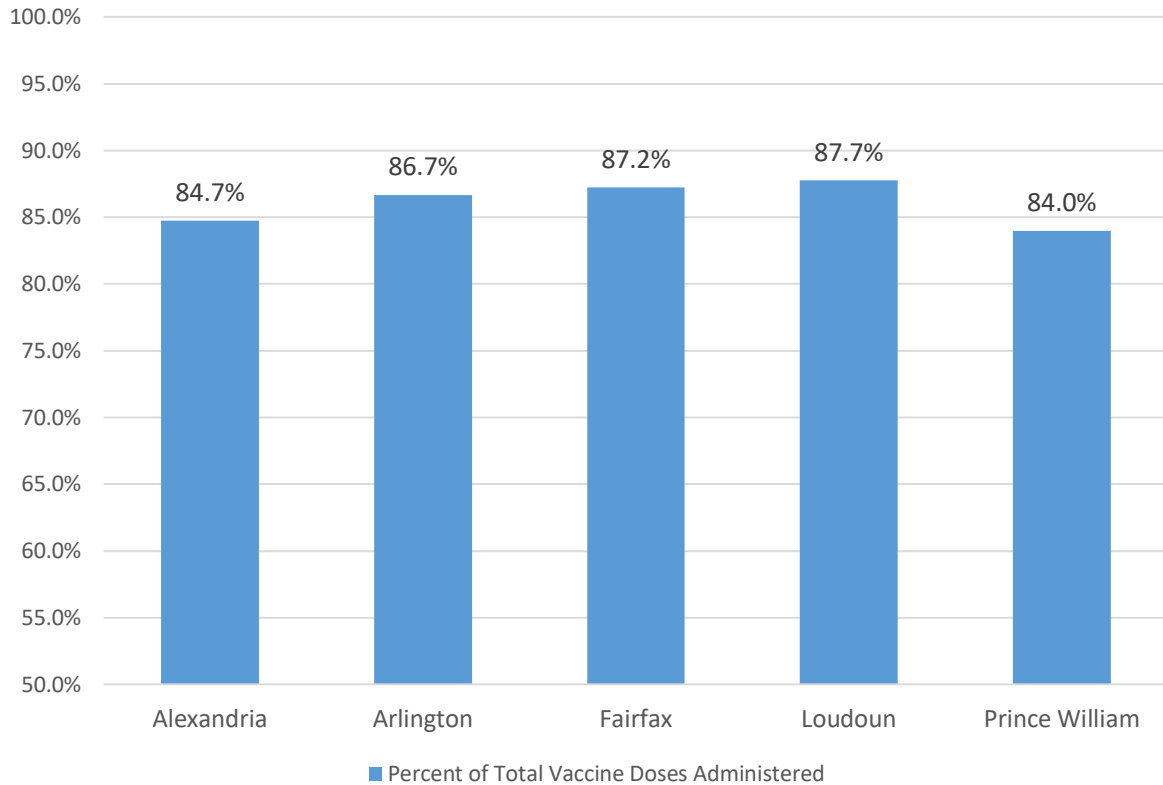


Virginia COVID-19 Deaths by Date Reported March 18, 2020 - August 5, 2022

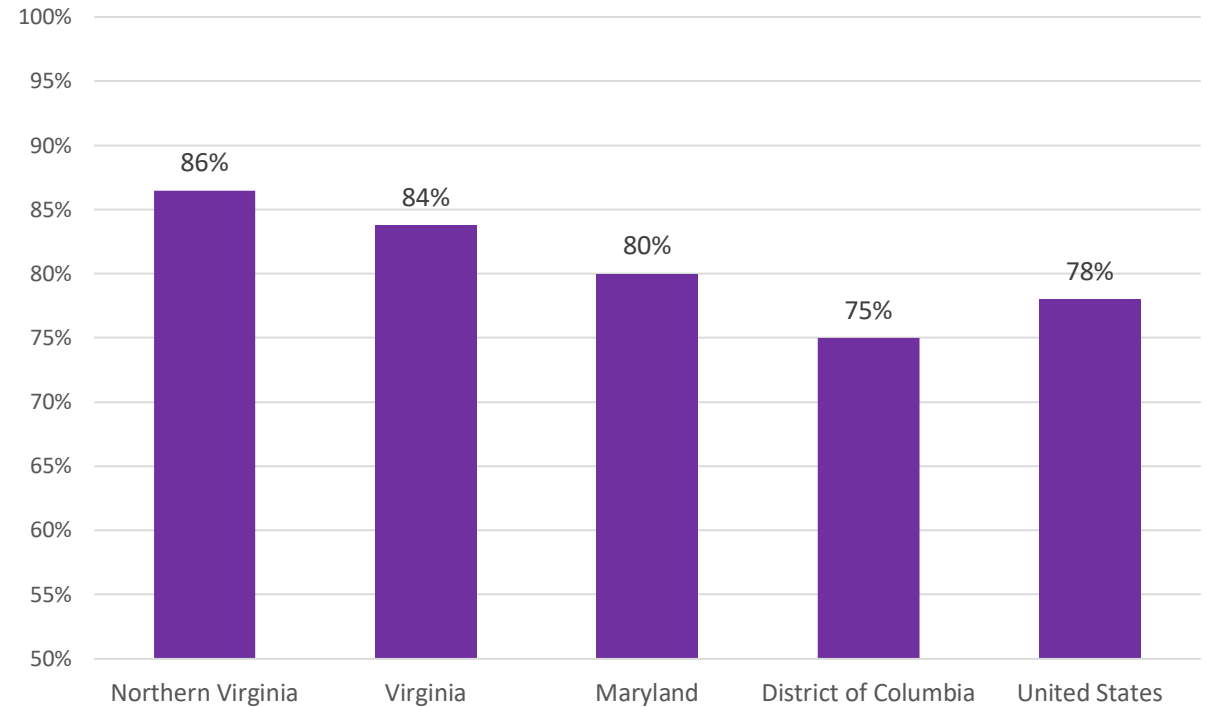


Source: VDH Covid-19 Public Use Dataset – Cases thru August 5, 2022 at <https://www.vdh.virginia.gov/coronavirus/>
Charts/Tabulations HSANV Staff, 2022. 7 per = 7 Day Moving Average

**Northern Virginia Health Districts
Percentage of Covid-19 Vaccine Doses Administered
(1st, 2nd, 3rd & 4th)
Based on Jurisdiction Vaccine Supply Received
As of August 5, 2022**

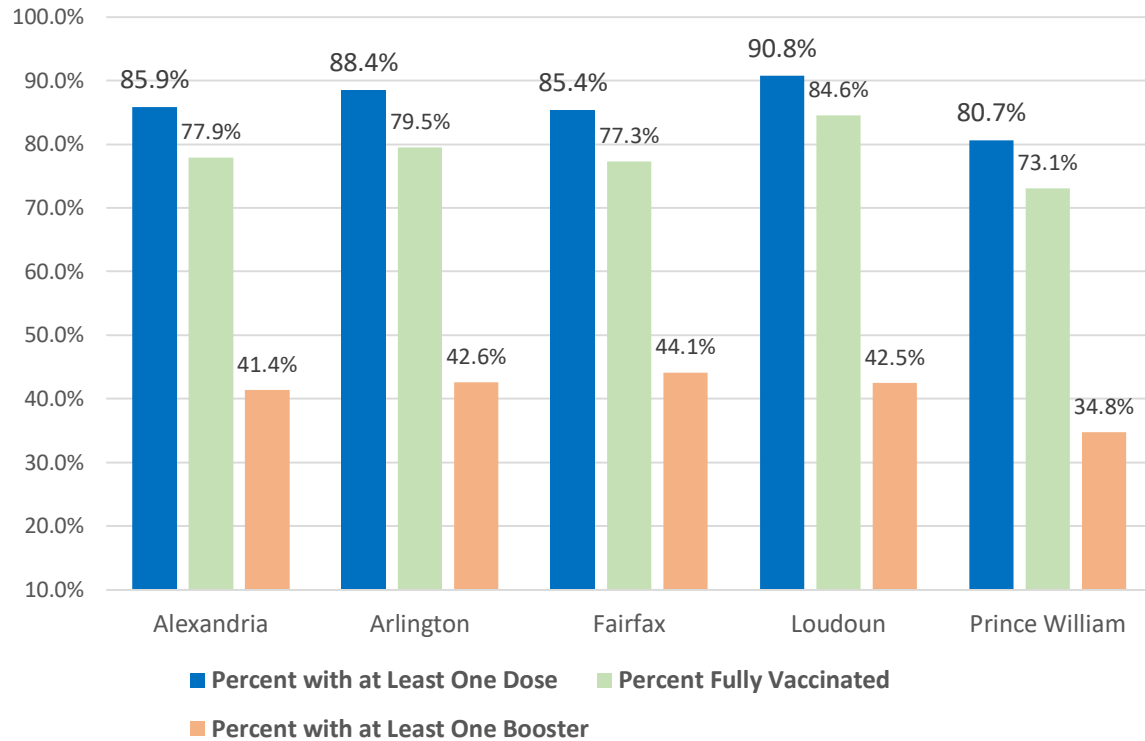


**Northern Virginia, Virginia, Maryland, D.C. and United States
Percentage of Covid-19 Vaccine Doses Administered
(1st, 2nd, 3rd & 4th)
Based on Jurisdiction Vaccine Supply Received
As of August 5, 2022**

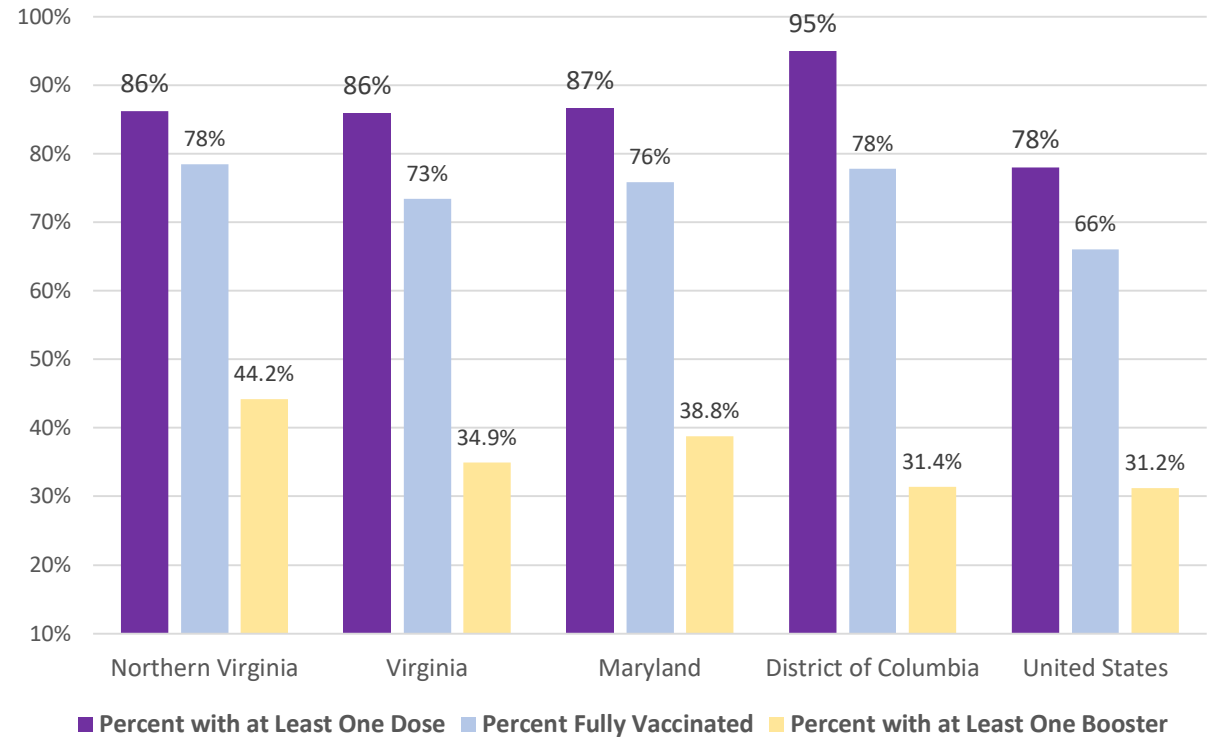


Source: VDH Covid-19 Public Use Dataset – August 5, 2022 at <https://www.vdh.virginia.gov/coronavirus/>; CDC Covid-19 Data as of August 5 2022.
Charts/Tabulations HSANV Staff, 2022. 7 per = 7 Day Moving Average

**Northern Virginia Health Districts
Percentage of Population Vaccinated
As of August 5, 2022**

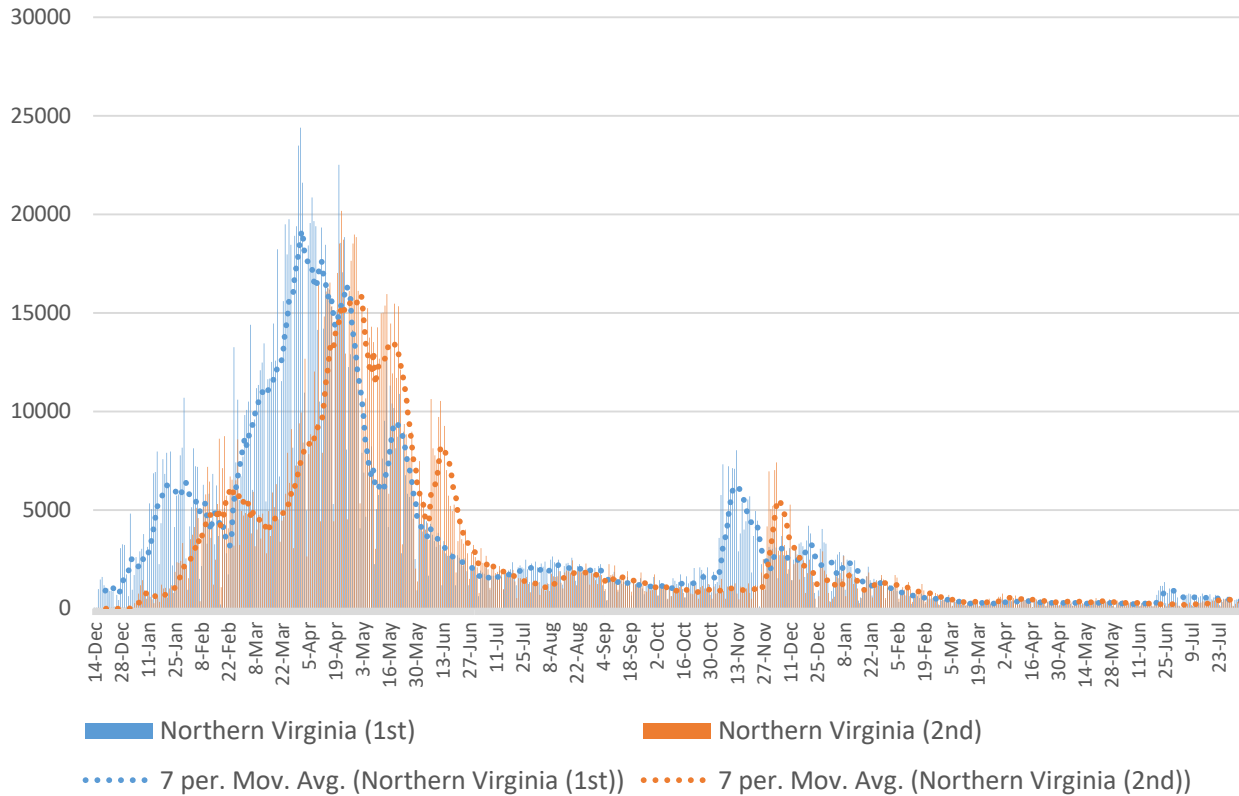


**Northern Virginia, Virginia, Maryland, D.C. and United States
Percentage of Population Vaccinated
As of August 5, 2022**

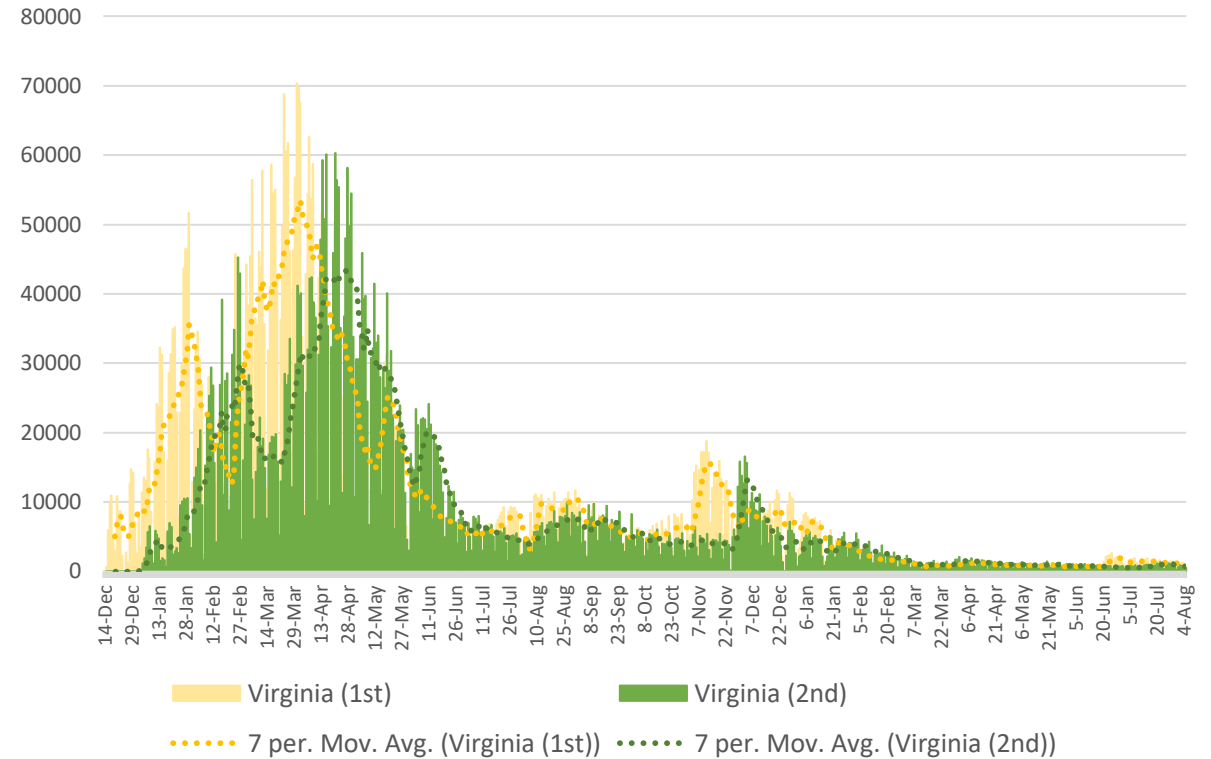


Source: VDH Covid-19 Public Use Dataset – August 5, 2022 at <https://www.vdh.virginia.gov/coronavirus/>; CDC Covid-19 Data as of August 5 2022.
Charts/Tabulations HSANV Staff, 2022. 7 per = 7 Day Moving Average

Northern Virginia
Covid-19 Vaccine 1st and 2nd Doses by Date Administered
As of August 5, 2022



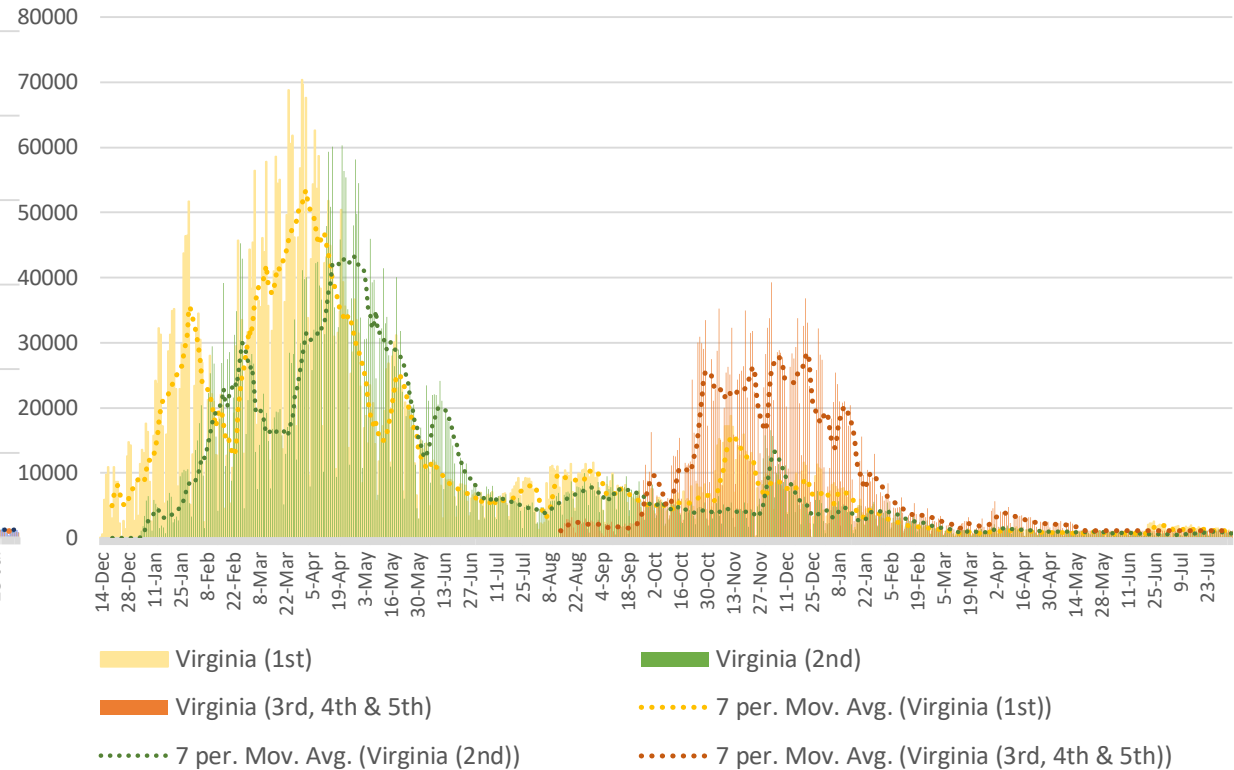
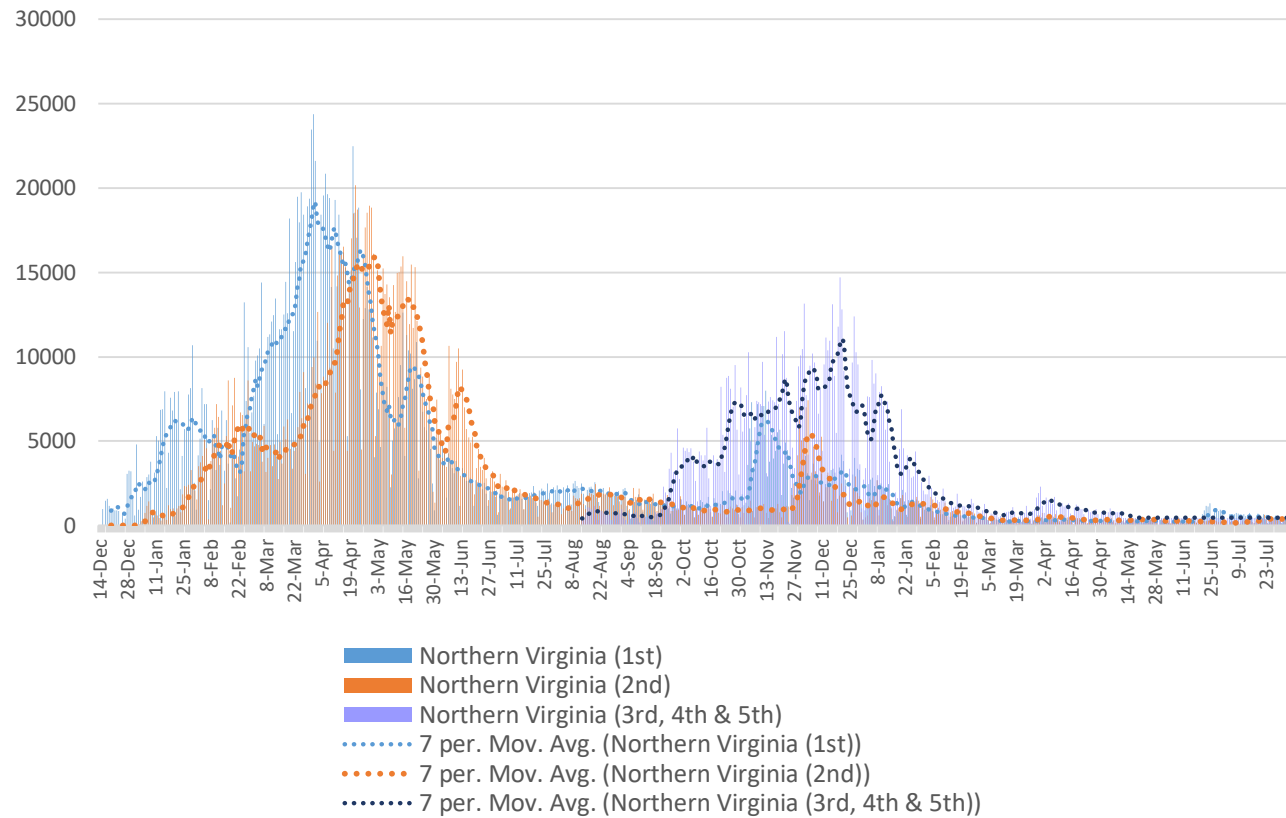
Virginia
Covid-19 Vaccine 1st and 2nd Doses by Date Administered
As of August 5, 2022



Source: VDH Covid-19 Public Use Dataset – August 5, 2022 at <https://www.vdh.virginia.gov/coronavirus/>; CDC Covid-19 Data as of August 5 2022.
 Charts/Tabulations HSNV Staff, 2022. 7 per = 7 Day Moving Average

Northern Virginia Covid-19 Vaccine 1st, 2nd & 3rd/4th/5th Doses by Date Administered As of August 5, 2022

Virginia Covid-19 Vaccine 1st, 2nd & 3rd/4th/5th Doses by Date Administered As of August 5, 2022



Source: VDH Covid-19 Public Use Dataset – August 5, 2022 at <https://www.vdh.virginia.gov/coronavirus/>; CDC Covid-19 Data as of August 5 2022.
Charts/Tabulations HSANV Staff, 2022. 7 per = 7 Day Moving Average